

SMT

SERVICES MACHINERY TRUCKS

MINING & QUARRY SOLUTIONS

WWW.SMT.NETWORK



- 25 countries
- 27 locations
- 15 subsidiaries

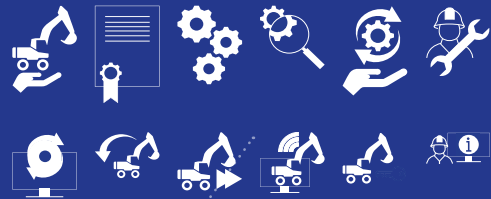
OUR NETWORK



COMPLETE MINING & QUARRY SOLUTIONS PROVIDER

time

**INTEGRATED
SOLUTION PROVIDER**



**FULL SERVICE
PROVIDER**

100% ABSORPTION



**VALUE ADDED
PRODUCT
PROVIDER**

RECURRING PROFITS



**PRODUCT
PROVIDER**

MARGIN IMPROVEMENT



service maturity

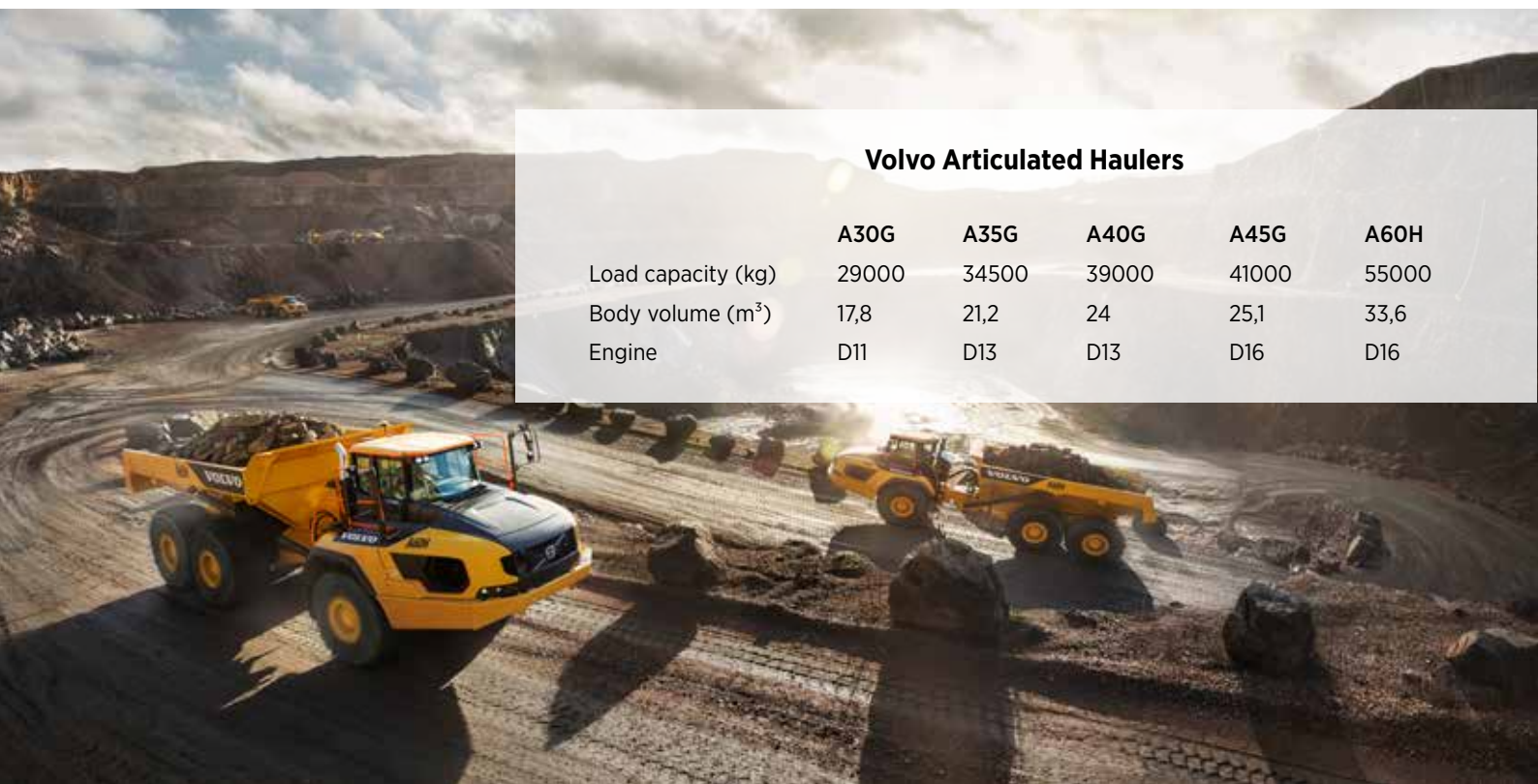
VOLVO EQUIPMENT

Volvo is the leading manufacturer of heavy equipment.

Its products are used in the mining of coal, copper, iron ore, oil sands, gold and other minerals and ores.

SMT provides logistics and an extended range of life cycle management service support for our mining customers through a large network of strategically located service centers within major mining regions.

- Articulated Haulers
- Rigid Dump Trucks
- Excavators
- Wheel Loaders
- FMX Trucks



Volvo Articulated Haulers

	A30G	A35G	A40G	A45G	A60H
Load capacity (kg)	29000	34500	39000	41000	55000
Body volume (m ³)	17,8	21,2	24	25,1	33,6
Engine	D11	D13	D13	D16	D16

Volvo Wheel Loaders

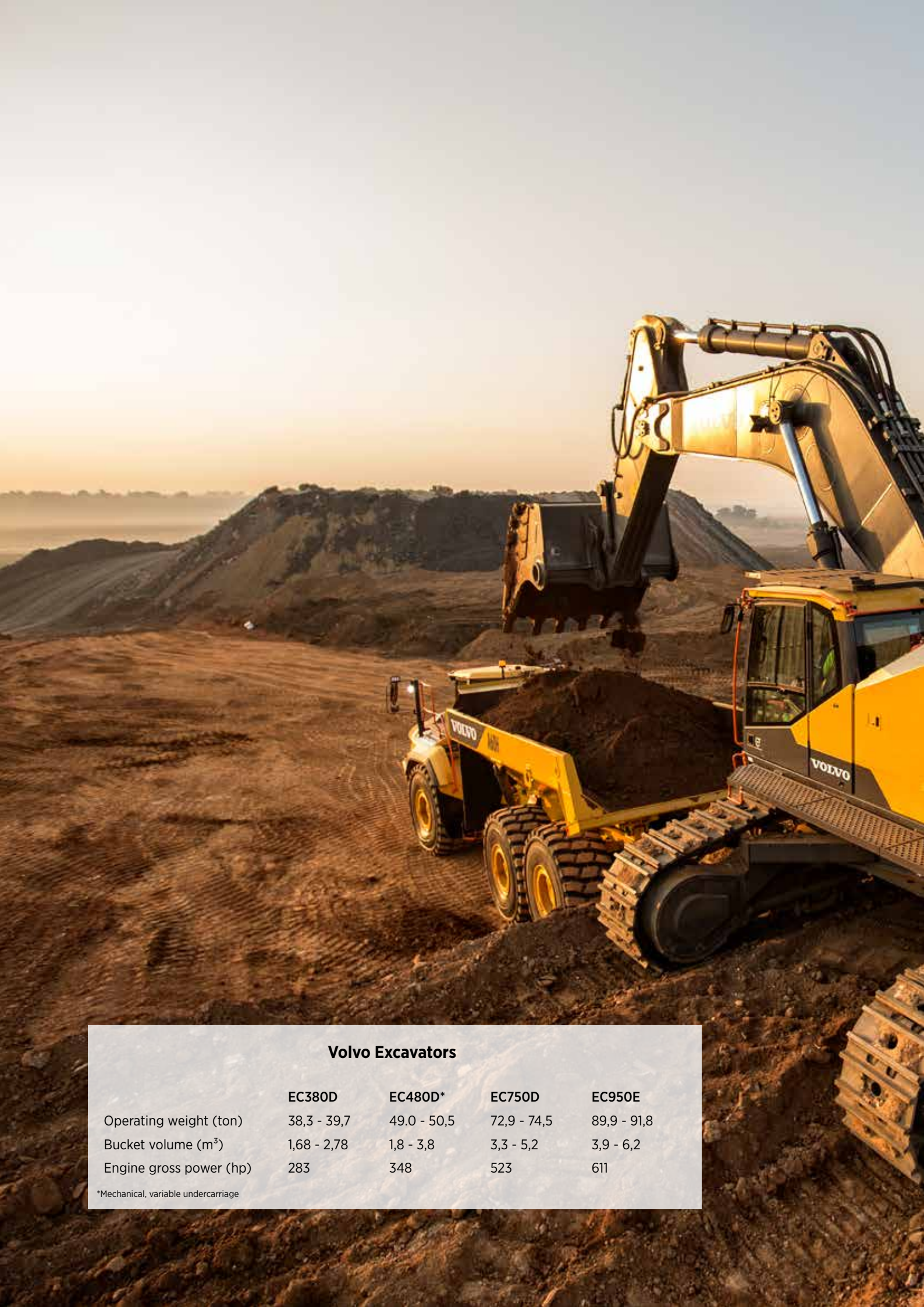
	L110F	L120Gz	L150H	L180H	L220H	L260H	L350H
Bucket volume (m ³)	2,7 - 9,5	3,1 - 5,2	3,1 - 27	3,7 - 14	4,5 - 14	5,3 - 10,2	6,2 - 12,7
Operating weight (ton)	18 - 20	17,8 - 18,6	24,4 - 27	27 - 29,5	31,1 - 34,5	34 - 39	50 - 56,3
Tipping load (ton)	11,2	8,1	15,9	18,8	20,9	23,7	34,2
Engine power (hp)	230	243	303	340	379	420	540



Volvo Rigid Dump Trucks

	R45D	R60D	R70D	R100
Payload capacity (kg)	40,825	54,430	65,00	95,000
Body volume (m ³)	26	35	41.5	60.4
Engine	Cummins QSK19-C525	Cummins QSK19-C700	MTU-2000TA	Cummins QST30





Volvo Excavators

	EC380D	EC480D*	EC750D	EC950E
Operating weight (ton)	38,3 - 39,7	49.0 - 50,5	72,9 - 74,5	89,9 - 91,8
Bucket volume (m ³)	1,68 - 2,78	1,8 - 3,8	3,3 - 5,2	3,9 - 6,2
Engine gross power (hp)	283	348	523	611

*Mechanical, variable undercarriage



Volvo FMX range

Tractors

Euro 3 - 13 litre engine 400-520 Hp / 2000-2500 Nm

Axles

Drive configuration	4x2 / 4x4	6x4 / 6x6
PTRA (t)*	65	100
PTAC (t)*	21	41

*Depending on the configuration



Tippers (rigid chassis)

Euro 3 - 13 litre engine 400-520 Hp / 2000-2500 Nm

Axles

Drive configuration	6x4 / 6x6	8x4 / 8x6
Body volume (m ³)*	16	27
PTAC (t)*	41	58

*Depending on the configuration



HITACHI EQUIPMENT

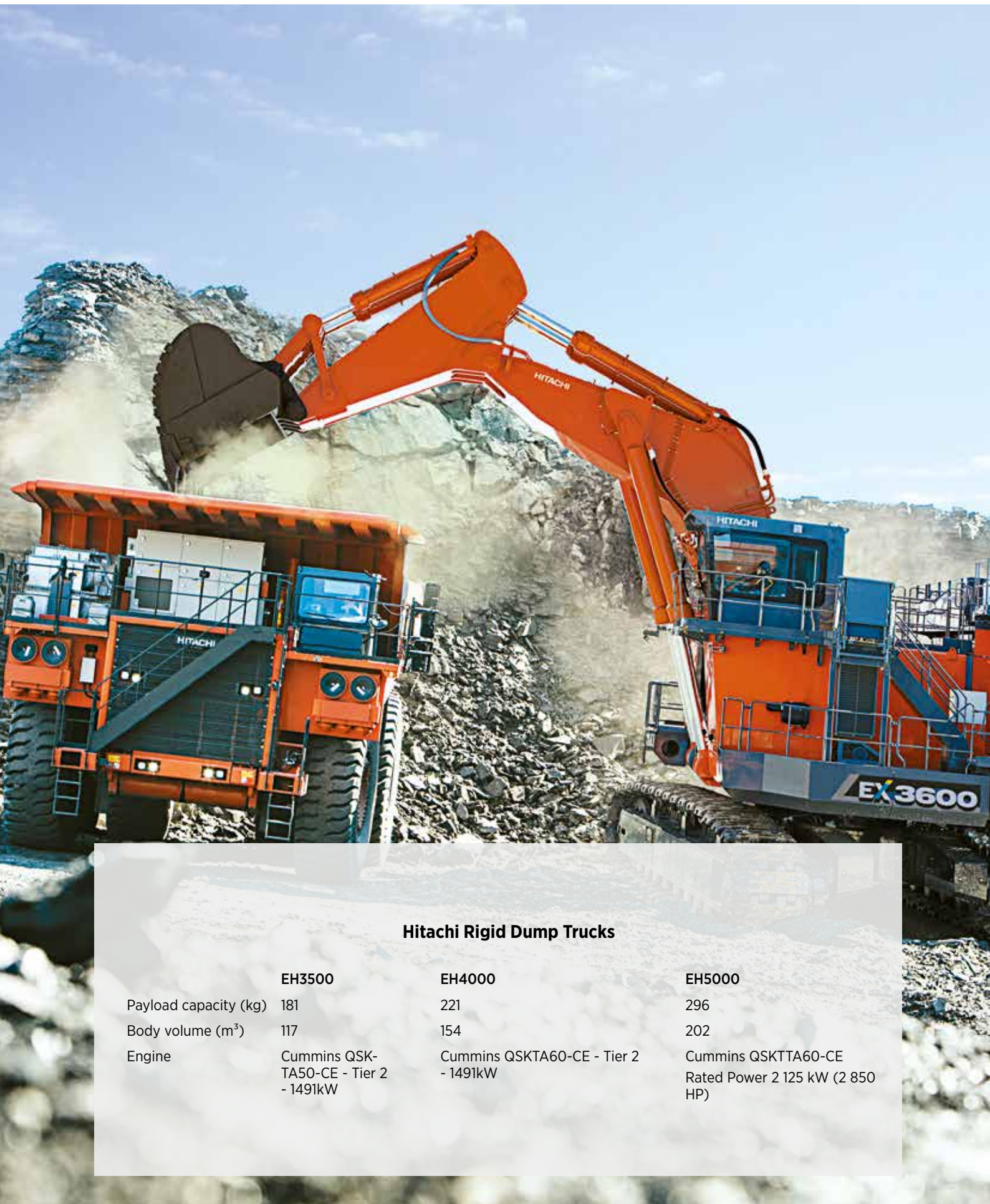
Heavy equipment made for mining.

We want you to think big when it comes to our mining equipment. Big in terms of vast quantities of materials handled 24 hours a day, by large machines with exceptional loading capacity; and big concerning considerable savings in your running costs.

Hitachi excavators are designed to make a big impact on productivity and efficiency.

Hitachi Excavators

	EX1200-7 (FCO)	EX2000-7 (FCO)	EX2600-7 (FCO)	EX3600-7 (FCO)	EX5600-7 (FCO)
Engine Rated Power (kW)	Cummins 567 kW (760 HP)	Cummins 746 kW (1 000 HP)	Cummins 1 119 kW (1 520 HP)	Cummins 1 1450 kW (1 971 HP)	Cummins 2 x 1 119 kW (1 520 HP)
Operating weight (kg)	Loading Shovel: 117 000 kg Backhoe: 115 000 kg BE-front: 117 000 kg	Loading Shovel: 192 000 kg Backhoe: 193 000 kg	Cummins Loading Shovel: 258 000 kg Backhoe: 256 000 kg	Cummins Loading Shovel: 365 000 kg Backhoe: 366 000 kg	Cummins Loading Shovel: 541 000 kg Backhoe: 545 000 kg
Bucket Capacity	Heavy Duty Rock Bucket - 7m ³	Heavy Duty Rock Bucket - 12m ³	Heavy Duty Rock Bucket - 17m ³	Heavy Duty Rock Bucket - 22m ³	Heavy Duty Rock Bucket - 34m ³



Hitachi Rigid Dump Trucks

	EH3500	EH4000	EH5000
Payload capacity (kg)	181	221	296
Body volume (m ³)	117	154	202
Engine	Cummins QSK-TA50-CE - Tier 2 - 1491kW	Cummins QSKTA60-CE - Tier 2 - 1491kW	Cummins QSKTTA60-CE Rated Power 2 125 kW (2 850 HP)

SUPPORT EQUIPMENT

Special Application

A fantastic range of configurations can be tailor made to perfectly suit basically any type of application for your Truck, Articulated Hauler or Excavator:

- Fuel trucks
- Water trucks
- Crane trucks
- Concrete mixers
- Explosive handling trucks
- Lube trucks
- Machinery transports
- Rescue vehicles
- Mobile workshop
- Drill rigs

Large choice of various equipment for your site

- Dozers
- Road maintenance equipment (compactors, graders...)
- Material handling equipment
- Buses for the people transportation on site
- Attachments for the wheel loaders, excavators and bulldozers



Dressta Bulldozers

	TD-15M Extra	TD-20M Extra	TD-25M Extra	TD-40E Extra
Operating weight (ton)	20,6	24,2	41,5	67,7
Blade capacity (m ³)	7,04	7,04	9,6	18,6
Engine output net (hp)	190	240	330	515
Drawbar pull max (kN)	535,3	620	791	1157





TOP PERFORMANCE REQUIRES TOP SUPPORT

We support your investment in machinery distributed by SMT network by offering a variety of aftersales service solutions and excellent availability on a wide range of parts.

What is the added value of SMT aftersales service? We are full service solution provider.

Maintenance and repair

We have the tools, knowledge and resources to ensure that you get the best performance of your equipments.

Parts stock and availability

With 85% global parts availability, SMT's large network and extensive logistics experience guarantee the availability of genuine parts and accessories, anytime and anywhere.

Customer support agreements

Optimise your operations and minimise the risk of unexpected costs and downtime by letting us take care of all your repairs and maintenance.

Fleet management

We propose a combination of products and services that can be tailored specifically to your requirements, enabling you to run your equipments more efficiently.



SERVICES & SUPPORT*

- › Project study & Site simulation
- › TCO and Life Cycle Costing
- › Telematics and Uptime Services
- › Training services - Operator and technical training
- › Preventative maintenance
- › Service Kits
- › Financing options
- › Site Efficiency Services
- › Condition Monitoring & Equipment Health
- › EcoOperator & Simulator Training
- › Service contracts
- › Genuine Parts
- › Certified Rebuild*
- › Extended Warranty

*Some services may be subject to exceptions depending on the country



SMT

SERVICES MACHINERY TRUCKS

MINING EQUIPMENT

PARTS

FINANCE

TRAINING

REPAIR & MAINTENANCE

SMT Africa
Avenue Arnaud Fraiteur, 15-23
1050 Brussels, Belgium
+32 2234 33 00
info.africa@smt.network

WWW.SMT.NETWORK