

INDICATOR LIGHTS



SATELLITE STATUS

- Off: No satellite data.
- Green: Fixed solution.
- Flashing red: Processing satellite data.
- Flashing green: Satellite position acquired but no fix.
- Flashing red and green: Critical error.



DATALINK STATUS

- Green: Ready to start.
- Flashing green: Transmitting data normally.
- Flashing blue: Shows data-pace with raw data recording enabled.



BLUETOOTH

- Blue: Bluetooth Connection enabled



BATTERY STATUS

- Green: 30% - 100%.
- Flashing green: 10% - 30% (speaker will beep).
- Flashing red: Below 10%.



POWER BUTTON

- **When turning off, press and hold for 8 sec (until short beep).**

UNICONTROL

MACHINE CONTROL MADE SIMPLE

QUICK GUIDE ROVER



NAVIGATION

PUSH

HOLD

JOB TYPE



PROJECT

HOLD SLOPE



HEIGHT/SIDE OFFSETS

MEASUREMENT SETTINGS



LOCK TO POINT/LINE



DELETE POINT/LINE

MEASURE TYPE



POINT LIST

MULTI-LINE



LINE



POINT



MEASURE POINT/LINE



CODES/ATTRIBUTES



CHANGE VIEW



ZOOM



3D ROTATE

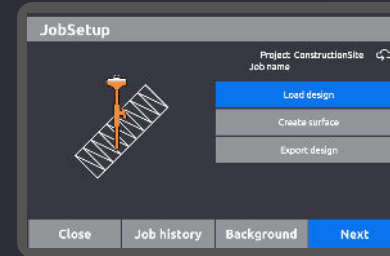


MOVE



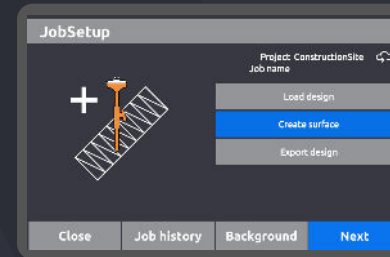
CHOOSE

JOB TYPES



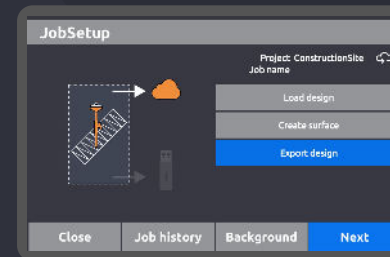
LOAD DESIGN

Load xml design file



CREATE SURFACE

Flat surface
Surface from points
Foundation from points



EXPORT DESIGN

Export xml/dxf design file