

Volvo Construction Equipment
Building Tomorrow



EC530E, EC550E

Volvo Excavators 54.0 - 56.4 t 462 hp



WELCOME TO OUR WORLD

Welcome to a world of industry leading machinery. A world where imagination, hard work and technological innovation will lead the way towards developing a future which is cleaner, smarter, and more connected. A world supported by the enduring values of the Volvo Group. A world of stability, sustainability and innovation. A world which we put our customers at the heart of.

Welcome to the world of Volvo Construction Equipment – we think you're going to like it here.

Working harder, working smarter

For over 180 years Volvo has been a pioneer in the design and manufacture of machines which set the standard for efficiency, performance and uptime. Across our range of excavators, wheel loaders and haulers, our reputation for engineering excellence is unrivalled, which means whatever your operation or application, we can provide a total fleet solution to help you succeed.

Building on our proud history, the Volvo Concept Lab continues to create cutting-edge ideas and innovative concepts, to ensure we offer customers machines which work harder and smarter long into the future.



Solutions for you

Our industry leading machines are just the start of your relationship with Volvo. As your partner, we have developed an extensive range of additional solutions to help you improve uptime, boost productivity and reduce costs.

Designed for your business

Structured across nine blocks, our portfolio of products and services are designed to complement your machine's performance and boost your profitability. Simply put, we offer some of the best guarantees, warranties and technological solutions in the industry today.

There when you need us

Whether you're buying new or used, our global network of dealers and technicians offer around-the-clock support, including machine monitoring and world-class parts availability. It's the basis of everything offered by Volvo Services, so you can be confident we've got you covered right from the start.

BUILDING TOMORROW

A purpose-built 50-tonner

Introducing the EC530E and EC550E, true 50-tonne machines and new size class excavators for Volvo. Outstanding levels of power and productivity make these crawler excavators the perfect partner for heavy-duty digging, mass excavation and large site preparation.

Big performance

The 50-tonne EC530E and EC550E truly punch above their weight, delivering the digging forces and lifting capacity more commonly found in a 60-tonne machine. Featuring the highest engine power in their class, these machines deliver superior swing torque and tractive force.



The undercarriage for the job

The perfect choice for the toughest applications, the robust EC550E undercarriage features a longer and wider lower frame compared to the EC530E, providing enhanced stability when handling heavier loads.



Less passes, more work

Optimize fleet use by up to 20%. These 50-tonne excavators are the perfect partner to 30-40t class Volvo articulated haulers, reducing the number of required passes – dramatically improving cycle times. With the additional support of Volvo Site Simulation, your Volvo dealer can work with you to advise on the optimum fleet configuration and site set-up for your operation.



A weight off your mind

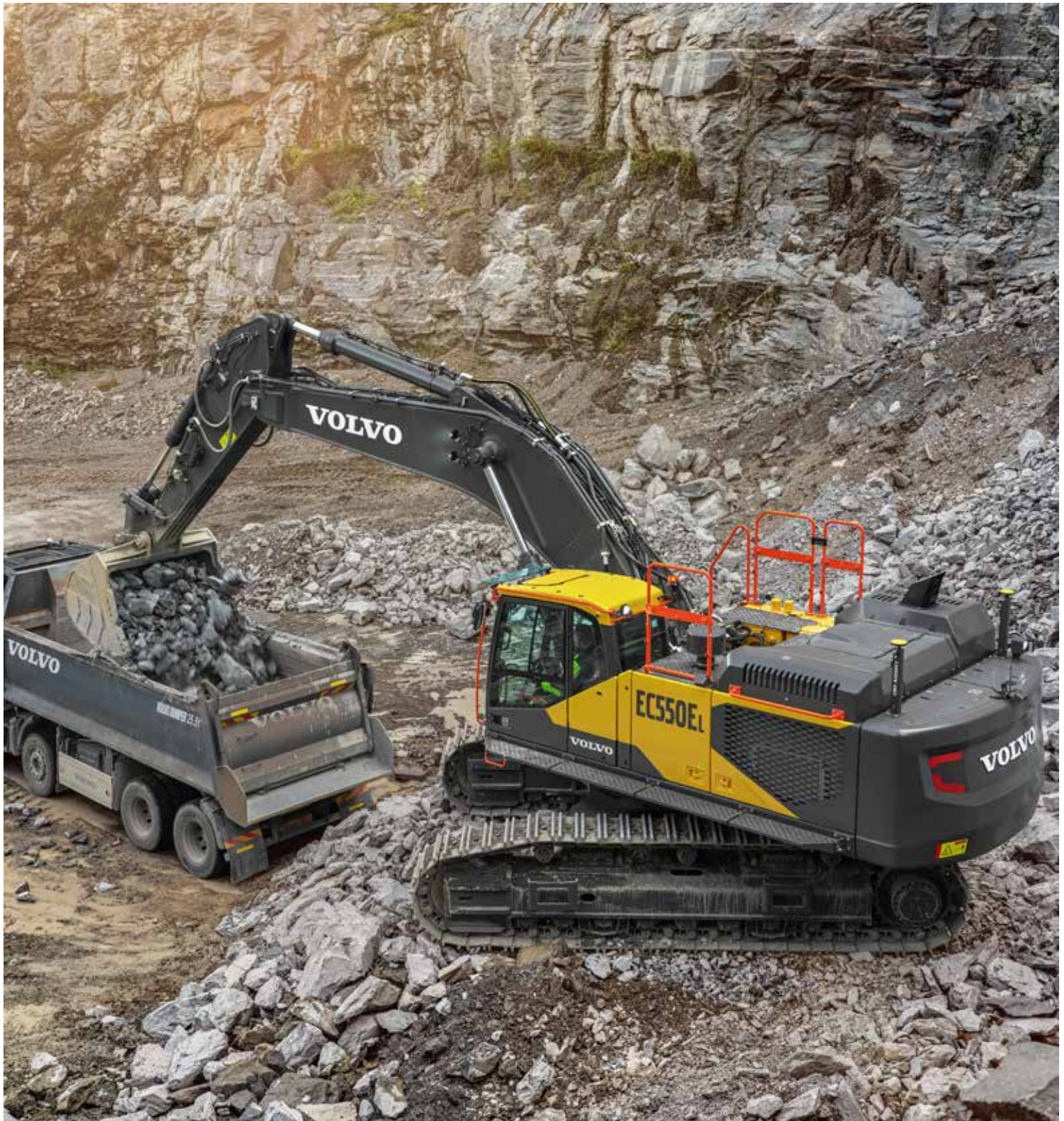
Take control of your productivity with the optional On-Board Weighing – part of the Dig Assist set of apps and powered by the 10" Volvo Co-Pilot display. The intelligent tool provides real-time information on bucket weight ensuring the optimum amount of material is moved with every pass. The system also records total tonnage, per shift or per day, to provide powerful long-term productivity data.





SET NEW STANDARDS

These true 50-tonne crawler excavators, equipped with large buckets, boost productivity by up to 20% – setting new standards for the industry.



25% MORE FUEL EFFICIENCY

Take fuel efficiency to new levels in the EC530E and EC550E. The next generation electro-hydraulic system with Independent Metering Valve Technology produces up to a 25% improvement in fuel efficiency. Engine pump optimization, which lowers engine rpm while optimizing power, and optimized hydraulic piping and size routings, further contribute towards the incredible levels of fuel efficiency.

Less cost, more profit

Reduce costs and boost profits in the EC530E and EC550E. Features including new electro-hydraulic system, Volvo attachments and operator training all contribute towards the unrivalled levels of efficiency delivered by these 50-tonne crawler excavators.

Unique Independent Metering Valve Technology

The latest pioneering innovation from Volvo, the next generation electro-hydraulic system with Independent Metering Valve Technology is the most advanced hydraulic system in the industry. The system provides intelligent electronic control with more control variable, compared to a conventional mechanically coupled hydraulic system. The result is maximum controllability and efficiency according to the specific application at hand.



The right tool for the job

Take on a variety of tasks with our range of factory-delivered attachments, including quick couplers and buckets. Perfectly matched to your machine, Volvo attachments are designed to create a single solid and reliable unit, delivering faster and more fuel-efficient cycle times. What's more, the machine is prepared with the necessary auxiliary piping to power hydraulic attachments such as breakers, thumbs, shears, grapples and more.



Get the most from your machine

While reliable and efficient machines of course play a vital role in reducing costs, enhancing safety and maximizing productivity, it is ultimately the performance of the operator that really makes the difference. We offer a wide range of training initiatives to help operators unlock the full capability of their Volvo excavator.



Even more efficiency

Fuel is the industry's number one operational cost and Fuel Efficiency Reports help to identify areas where efficiency improvements can be made, providing clear insights into the fuel performance of a fleet, site or individual machine. If you need further support putting insight into action, your Volvo dealer is on hand to help you develop a plan to deliver long-term efficiency gains.



Ultimate control

Welcome to the ultimate in operator control and convenience. The revolutionary new generation electro-hydraulics with Independent Metering Valve Technology enable a range of intelligent functions which take the operator experience to new levels, including creep mode, motion priority functions, reduced bouncing and Comfort Drive Control.

Carry with care

The perfect solution for lift and carry operations, creep mode utilizes an independent pump flow during travel to maintain a constant and slower travel speed.



Comfortable travel

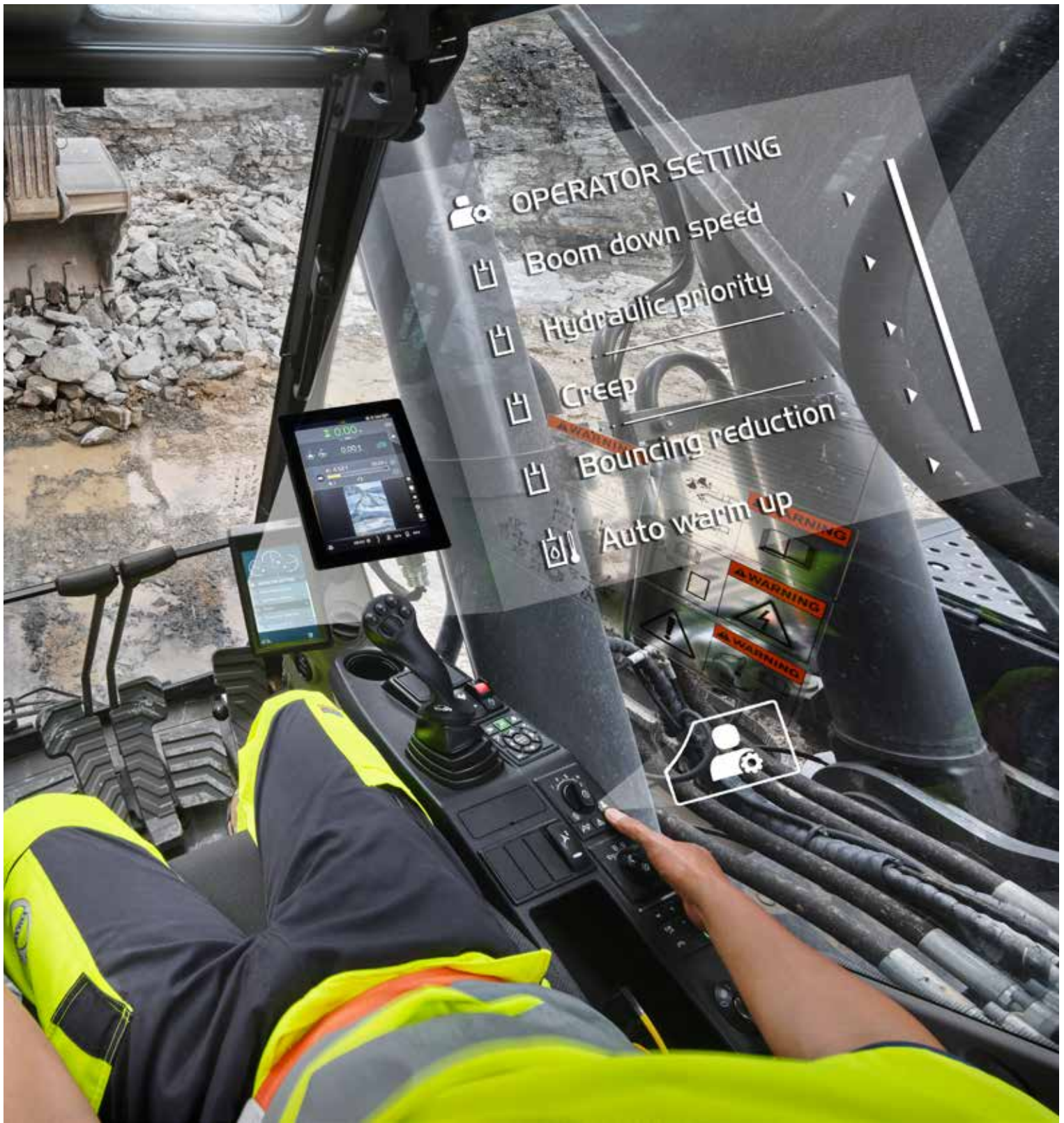
For easy operation and reduced operator fatigue, Comfort Drive Control gives operators the opportunity to steer the machine using the advanced joystick rollers with index finger grip, instead of using the pedals.



A smoother shift

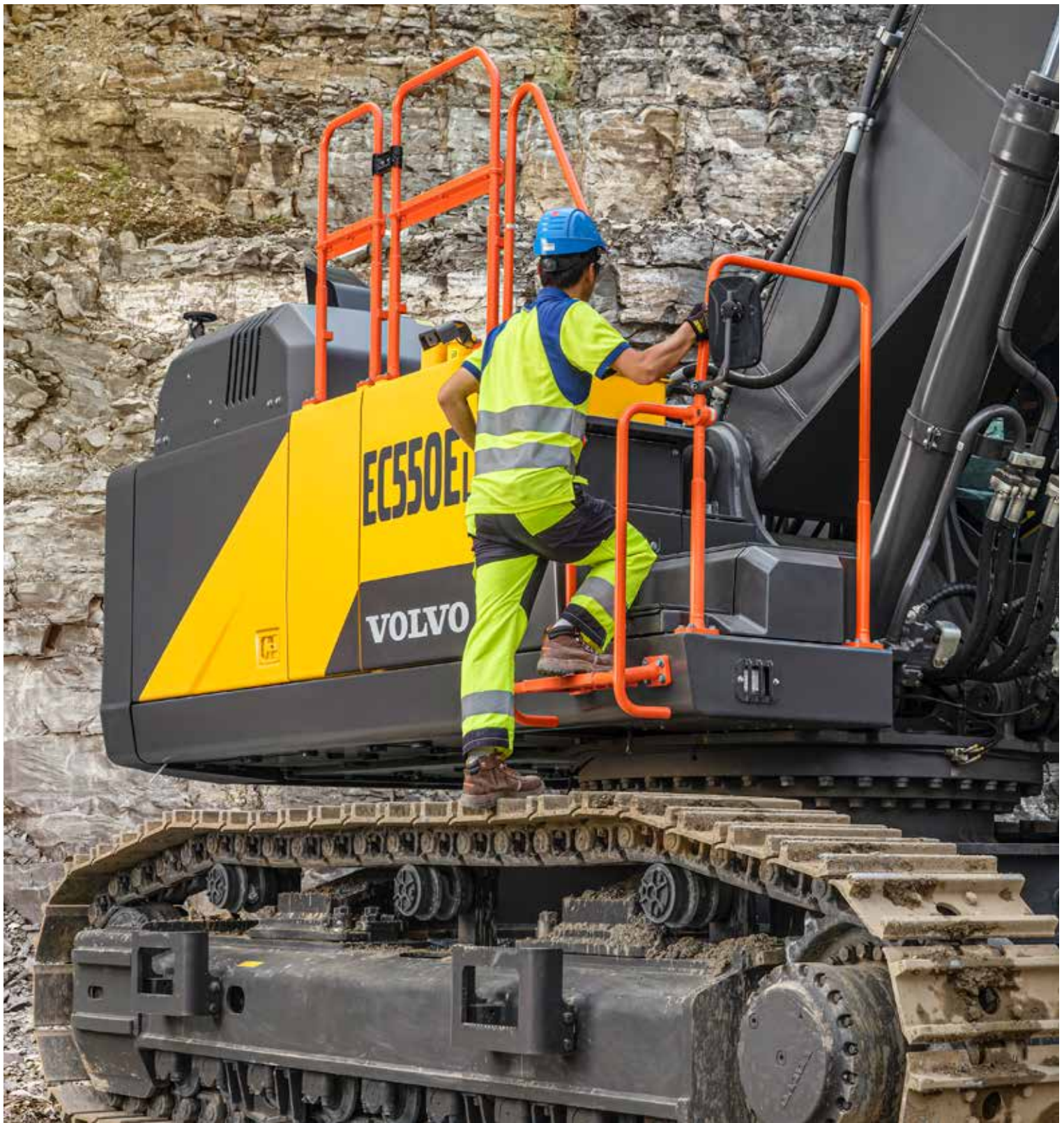
Boom and arm bouncing reduction technology dramatically reduces machine shock, resulting in a more comfortable and productive operator performance.





ADAPT TO THE JOB

Operators can easily select and adjust a number of functions depending on personal preferences and the task at hand, including Boom/Swing and Boom/Travel priority which enables prioritization of one function over another. Operators can also easily adjust the boom down speed, ideal for precision tasks which require optimum control.



EASY AS 1, 2, 3

Reach the upper structure with safety and confidence thanks to 3-point right-hand side access, also providing access to the handily located UREA/DEF tank. A splash guard on the UREA tank makes filling quicker and easier, reducing the risk of spillage and subsequent corrosion.

For your comfort and safety

Whether working inside or on the machine, features such as unrivalled visibility and 3-point right-hand side access mean you can be sure that the highest levels of safety have been considered in every design detail of the EC530E and EC550E.

See it all

Operators benefit from outstanding visibility thanks to rear and side-view cameras. Furthermore, the optional Volvo Smart View uses front, rear and side cameras to provide a real-time, overhead view of the machine, resulting in safer machine rotation while working, especially in confined spaces.



Industry-renowned cab

Step inside the best cab on the market. The ROPS cab exceeds industry standards for this class of machine, and with low noise and low vibration, operators will experience the ultimate in comfort. Already boasting best-in-class visibility, the optional high visibility cab and one-piece front window enhance visibility even more.



Get around safely

Industry renowned features such as bolted anti-slip plates, high visibility guardrails and handrails ensure the highest levels of safety when negotiating the machine. For further convenience, the optional foldable cab entrance step and side walkways fold away to enable easier transportation.



Work harder for longer

Reduced maintenance requirements, durable design and outstanding reliability means you can count on the EC530E and EC550E to deliver optimum results – shift after shift, day after day.

For the toughest tasks

The 50-tonne EC530E and EC550E are designed to deliver performance which lasts, with an ultra-durable and reinforced undercarriage providing the durability and strength you would expect from a 60-tonne machine. Combine this with a super-strong upper and lower frame, and boom and arm with larger pin size, and these machines are ready to take on the toughest of applications.



Machine monitoring made easy

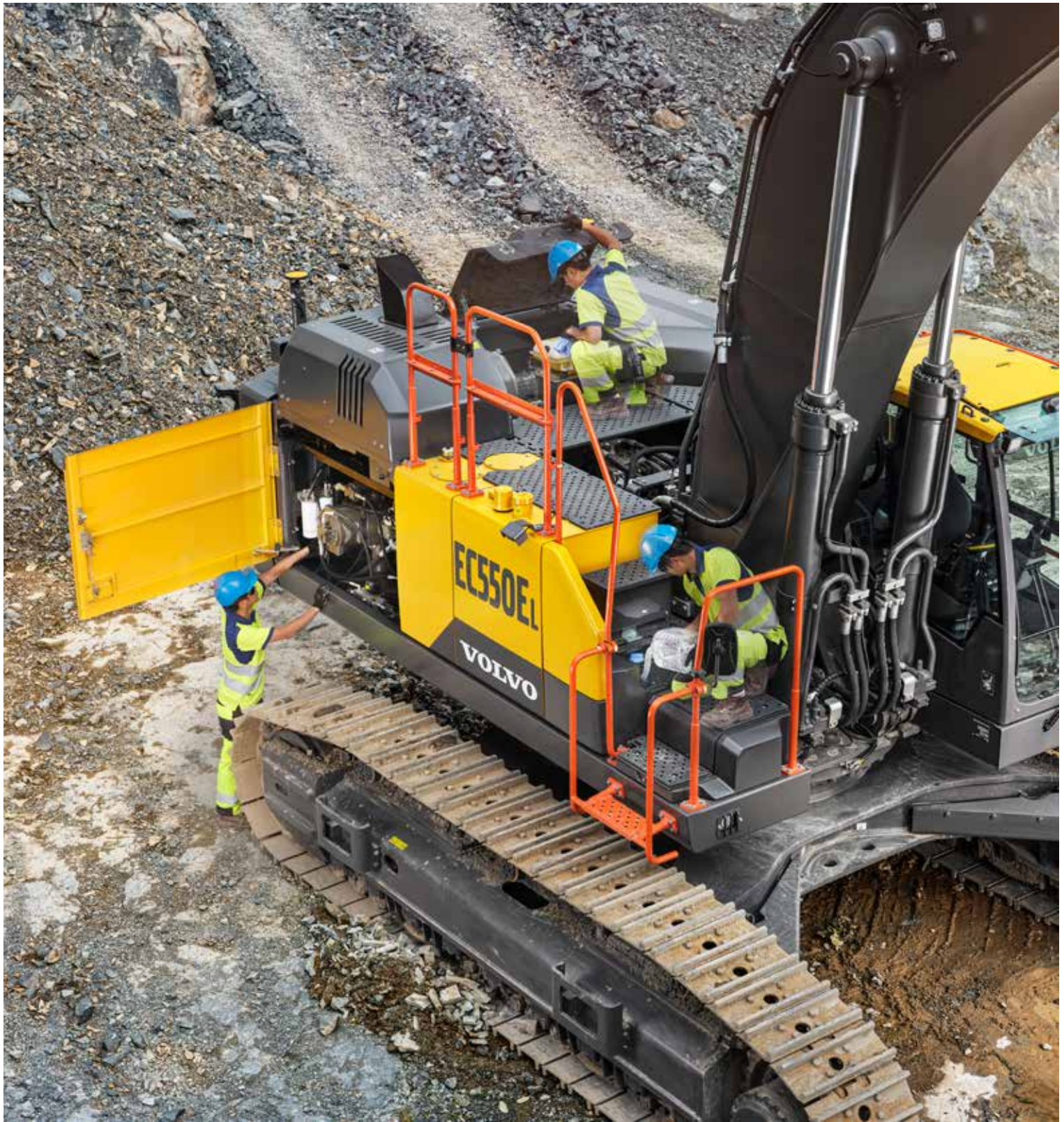
Maximize machine uptime and reduce repair costs with the CareTrack telematic system. Choose to keep track of your machine yourself or let us take care of it with Active Care. Our Volvo Uptime Center will provide 24/7 machine monitoring, supplying weekly reports and notifying you should preventive maintenance action be required.



Keeping you moving

Maintain productivity and machine uptime with our range of widely available, tested and approved Genuine Volvo Parts – all backed by Volvo warranty. Your Volvo dealer can help you stay on track, offering flexible maintenance and repair options, as well as planned servicing, to extend the life of your excavator.





UPTIME YOU CAN COUNT ON

Hydraulic pilot lines have been removed in the EC530E and EC550E, reducing the number of couplings required, for increased machine reliability. Electric connectors which exceed Ingress Protection 69K water-proofed standards also contribute to long component life. Spend more time working without interruption thanks to 1 000-hour engine oil and engine oil filter change intervals; grouped filters accessible from the ground level make servicing quick and easy.

Move more for less

TRUE 50-TONNE PERFORMANCE

- Big buckets, 20% more productivity
- Highest engine power of its class
- Superior swing torque and tractive force
- Digging forces/lifting capacity commonly found in a 60-tonne machine
- Handle heavier loads with the longer/wider EC550E undercarriage
- Perfect match to 30-40t Volvo Articulated Haulers

BIG ON EFFICIENCY

- Electro-hydraulic system with Independent Metering Valve Technology: +25% fuel efficiency
- Engine pump optimization
- Optimized hydraulic piping & size routing

ULTIMATE CONTROL

- Boom/Swing and Boom/Travel priority
- Adjustable boom down speed
- Boom and arm bouncing reduction
- Creep mode: carry with care
- Comfort Drive Control: joystick steering



VOLVO SERVICES: BOOST YOUR PROFITS

- On-Board Weighing, powered by Volvo Co-Pilot (Dig Assist)
- Range of matched Volvo Attachments
- Volvo Site Simulation
- Fuel Efficiency Report
- Operator training
- Volvo Active Care: 24/7 machine monitoring



QUICK AND EASY SERVICING

- 3-point right-hand side access to the upper structure
- Removed hydraulic pilot lines: reduced need for oil couplings
- Splash guard on the UREA/DEF tank
- Grouped filters, accessed from ground-level or side walkway

GET AROUND SAFELY

- ROPS cab: spacious, ergonomic and low-noise
- Rear and side cameras, Volvo Smart View
- High-visibility cab, One-piece front window
- Bolted anti-slip plates
- Foldable walkways
- High visibility handrails/guardrails

WORK HARDER FOR LONGER

- Ultra-durable and reinforced undercarriage, upper and lower frame
- Reinforced digging equipment, including larger pin size
- Electric connectors exceeding Ingress Protection 69K water-proofed standards
- 1 000hr engine oil and engine oil filter change intervals

Volvo EC530E, EC550E in detail

Engine

Volvo diesel engine uses Volvo Advanced Combustion Technology (V-ACT) to deliver lower emissions, superior performance and fuel efficiency. The engine uses precise, high pressure fuel injectors, turbo charger and intercooler, and electronic engine controls to optimize machine performance.

Air Filter: 3-stage and precleaner.

Automatic Idling System: Reduces engine speed to idle when the levers and pedals are not activated resulting in less fuel consumption and low cab noise levels.

Engine	Volvo	D13J
Max power at	r/min	1 600
Net, ISO 9249/SAE J1349	kW	339
	hp	461
Gross, ISO 14396/SAE J1995	kW	340
	hp	462
Max torque	Nm	2 200
at engine speed	r/min	1 300
No. of cylinders		6
Displacement	l	12.8
Bore	mm	131
Stroke	mm	158

Electrical System

High-capacity electrical system that is well protected. Waterproof double-lock harness plugs are used to secure corrosion-free connections. The main relays and solenoid valves are shielded to prevent damage. The master switch is standard.

Voltage	V	24
Batteries	V	2 x 12
Battery capacity	Ah	200
Alternator	V/A	28/80

Undercarriage

The undercarriage has a robust X-shaped frame. Greased and sealed track chains are standard.

EC530E

Track shoes		2 x 50
Link pitch	mm	228.6
Shoe width, triple grouser	mm	600 / 750 / 900
Shoe width, double grouser	mm	600
Bottom rollers		2 x 9
Top rollers (retractable)		2 x 3

EC550E

Track shoes		2 x 51
Link pitch	mm	228.6
Shoe width, triple grouser	mm	600 / 750 / 900
Shoe width, double grouser	mm	600
Bottom rollers		2 x 9
Top rollers (retractable)		2 x 3

Cab

The operator's cab has easy access via a wide door opening. The cab is supported on hydraulic dampening mounts to reduce shock and vibration levels. These along with sound absorbing lining provide low noise levels. The cab has excellent all-round visibility. The front windshield can easily slide up into the ceiling, and the lower front glass can be removed and stored in the side door.

Integrated air-conditioning and heating system: The pressurized and filtered cab air is supplied by an automatically-controlled fan. The air is distributed throughout the cab from 14 vents.

Ergonomic operator's seat: The adjustable seat and joystick console move independently to accommodate the operator. The seat has nine different adjustments plus a seat belt for the operator's comfort and safety. Refrigerant of the type R134a is used when this machine is equipped with air conditioning. Contains fluorinated greenhouse gas R134a, Global Warming Potential 1.430 t CO₂-eq.

Hydraulic system

Main pump, Type 2 x Variable displacement axial piston pumps		
Maximum flow	l/min	2 x 416
Pilot pump, Type Gear pump		
Maximum flow	l/min	16
Max. pressure		
Implement	MPa	33.8/36.3
Travel circuit	MPa	33.8
Slew circuit	MPa	27.9
Pilot circuit	MPa	3.9

Hydraulic Motors

Travel: Variable displacement axial piston motor with mechanical brake.
Slew: Fixed displacement piston motor with mechanical brake.

Hydraulic Cylinders

Mono boom		2
Bore x Stroke	ø x mm	175 x 1 590
Arm		1
Bore x Stroke	ø x mm	190 x 1 942
Bucket		1
Bore x Stroke	ø x mm	170 x 1 330
ME Bucket		1
Bore x Stroke	ø x mm	180 x 1 335

Travel System

Each track is powered by an automatic two-speed shift travel motor. The track brakes are multi-disc, spring-applied and hydraulic released. The travel motor, brake and planetary gears are well protected within the track frame.

Max. drawbar pull	kN	350
Max. travel speed (low)	km/h	3.5
Max. travel speed (high)	km/h	5.4
Gradeability	°	35

Swing system

The swing system uses an axial piston motors, driving a planetary gearbox for maximum torque. An automatic holding brake and anti-rebound valve are standard.

Max. slew speed	r/min	9.4
Max. slew torque	kNm	197

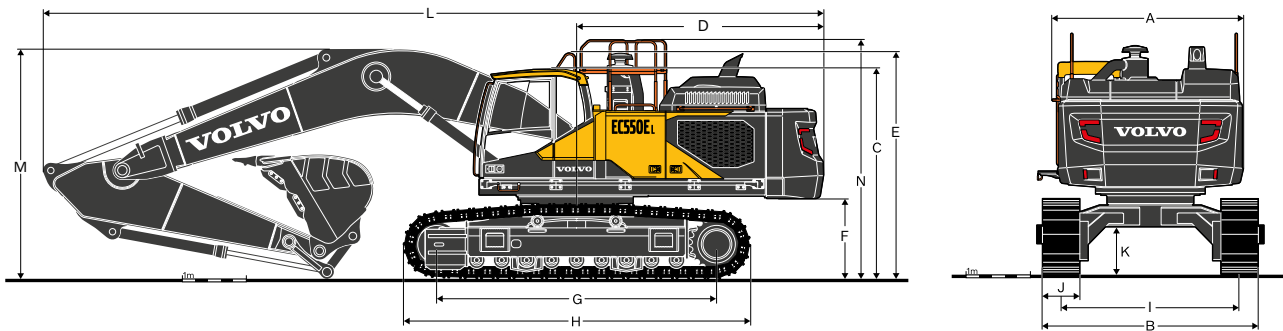
Service Refill

Fuel tank	l	680
DEF/AdBlue® tank	l	62.5
Hydraulic system, total	l	590
Hydraulic tank	l	270
Engine oil	l	55
Engine coolant	l	66
Slew reduction unit	l	2 x 6.4
Travel reduction unit	l	2 x 8.0

Sound Level

Sound pressure level in cab according to ISO 6396		
L _{pA}	dB	71
External sound level according to ISO 6395 and EU Noise Directive 2000/14/EC		
L _{WA}	dB	107

Specifications



DIMENSIONS

Description	Unit	EC530E retractable undercarriage					
		6.5 ME		7.0 HD			
Boom	m						
Arm	m	2.55	3.0	2.55	3.0	3.35	3.9
A. Overall width of upper structure	mm	2 990	2 990	2 990	2 990	2 990	2 990
B. Overall width (retracted)	mm	2 990	2 990	2 990	2 990	2 990	2 990
Overall width (extended)	mm	3 490	3 490	3 490	3 490	3 490	3 490
C. Overall height of cab *	mm	3 415	3 415	3 415	3 415	3 415	3 415
D. Tail swing radius	mm	3 880	3 880	3 880	3 880	3 880	3 880
E. Overall height of Handrail *	mm	3 670	3 670	3 670	3 670	3 670	3 670
F. Counterweight clearance *	mm	1 370	1 370	1 370	1 370	1 370	1 370
G. Tumbler length	mm	4 400	4 400	4 400	4 400	4 400	4 400
H. Track length	mm	5 460	5 460	5 460	5 460	5 460	5 460
I. Track gauge (retracted)	mm	2 390	2 390	2 390	2 390	2 390	2 390
Track gauge (extended)	mm	2 890	2 890	2 890	2 890	2 890	2 890
J. Shoe width	mm	600	600	600	600	600	600
K. Min. ground clearance *	mm	735	735	735	735	735	735
L. Overall length	mm	11 770	11 760	12 270	12 260	12 240	12 235
M. Overall height of boom *	mm	4 400	4 340	4 200	4 010	3 910	3 930
N. Overall height of guardrail, unfolded	mm	3 870	3 870	3 870	3 870	3 870	3 870
N. Overall height of guardrail, folded	mm	3 385	3 385	3 385	3 385	3 385	3 385

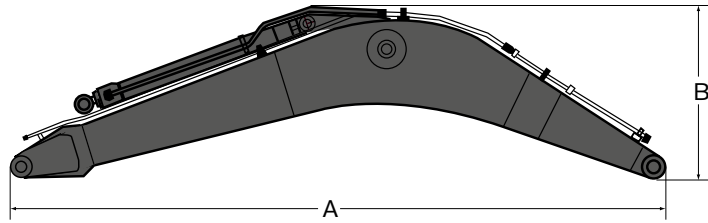
* Without shoe grouser

DIMENSIONS

Description	Unit	EC550E wide retractable undercarriage					
		6.5 ME		7.0 HD			
Boom	m						
Arm	m	2.55	3.0	2.55	3.0	3.35	3.9
A. Overall width of upper structure	mm	2 990	2 990	2 990	2 990	2 990	2 990
B. Overall width (retracted)	mm	3 400	3 400	3 400	3 400	3 400	3 400
Overall width (extended)	mm	3 900	3 900	3 900	3 900	3 900	3 900
C. Overall height of cab	mm	3 415	3 415	3 415	3 415	3 415	3 415
D. Tail swing radius	mm	3 880	3 880	3 880	3 880	3 880	3 880
E. Overall height of Handrail	mm	3 670	3 670	3 670	3 670	3 670	3 670
F. Counterweight clearance *	mm	1 370	1 370	1 370	1 370	1 370	1 370
G. Tumbler length	mm	4 515	4 515	4 515	4 515	4 515	4 515
H. Track length	mm	5 580	5 580	5 580	5 580	5 580	5 580
I. Track gauge (retracted)	mm	2 800	2 800	2 800	2 800	2 800	2 800
Track gauge (extended)	mm	3 300	3 300	3 300	3 300	3 300	3 300
J. Shoe width	mm	600	600	600	600	600	600
K. Min. ground clearance *	mm	735	735	735	735	735	735
L. Overall length	mm	11 770	11 760	12 270	12 260	12 240	12 235
M. Overall height of boom *	mm	4 400	4 340	4 200	4 010	3 910	3 930
N. Overall height of guardrail, unfolded	mm	3 870	3 870	3 870	3 870	3 870	3 870
N. Overall height of guardrail, folded	mm	3 385	3 385	3 385	3 385	3 385	3 385

* Without shoe grouser

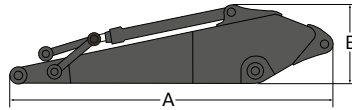
Specifications



DIMENSIONS

Boom	m	6.5 ME	7.0 HD
A. Length	mm	6 780	7 280
B. Height	mm	1 910	1 785
Width	mm	906	906
Weight*	kg	5 140	5 025

* Includes arm cylinder, piping and pin



DIMENSIONS

Arm	m	2.55	3.0	3.35	3.9
A. Length	mm	3 805	4 270	4 620	5 170
B. Height	mm	1 260	1 260	1 260	1 260
Width	mm	605	605	605	605
Weight*	kg	2 710	2 920	2 875	3 030

* Includes bucket cylinder, linkage and pin

MACHINE WEIGHTS AND GROUND PRESSURE

Description	Shoe width	EC530E with RETRACTABLE undercarriage, 7.0 m boom, 3.35 m arm, 2 800 kg bucket, 10 600 kg counterweight		EC550E with WIDE RETRACTABLE undercarriage, 7.0 m boom, 3.35 m arm, 2 800 kg bucket, 10 600 kg counterweight	
		Operating weight	Ground pressure	Operating weight	Ground pressure
	mm	kg	kPa	kg	kPa
Triple grouser	600	54 140	92.7	54 820	91.7
	750	54 920	75.3	55 620	74.4
	900	55 700	63.6	56 420	62.9
Double grouser	600	54 010	92.5	54 690	91.4

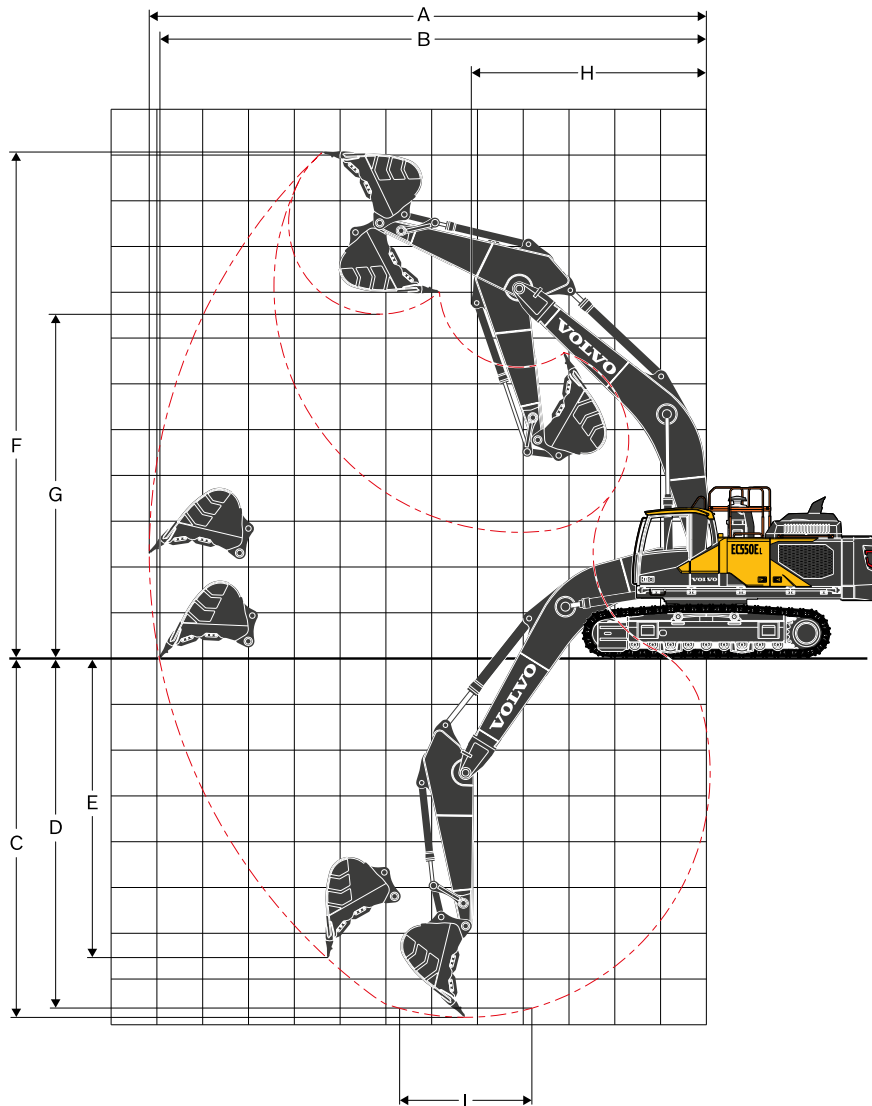
BUCKET SELECTION GUIDE

Bucket type		Capacity	Cutting width	Weight	Teeth	EC530EL retractable undercarriage						
						600 mm shoe, 10 600 kg counterweight						
						6.5 m ME boom			7.0 m boom			
						L	mm	kg	EA	2.55 m	3.0 m	2.55 m
Direct fit Buckets	General purpose	2 840	1 940	2 543	5	C	C	C	C	C	C	
		3 310	2 190	2 830	6	C	C	C	C	B	B	
		3 600	2 060	3 078	6	C	C	C	B	B	A	
		4 000	2 240	3 247	6	C	B	B	A	A	X	
	Heavy duty	2 400	1 710	2 488	5	D	D	D	D	D	D	
		2 660	1 840	2 576	5	D	D	D	D	D	C	
		2 840	1 940	2 671	5	D	D	D	D	C	C	
		3 310	2 190	2 973	6	D	C	C	C	B	B	
		3 600	2 060	3 124	6	C	C	B	B	B	A	
		3 820	2 160	3 219	6	C	B	B	B	A	X	
	Buckets with UQC	General purpose	2 840	1 940	2 543	5	C	C	C	C	C	B
			3 310	2 190	2 830	6	C	C	B	B	A	A
			3 600	2 060	3 078	6	C	B	B	A	A	X
			4 000	2 240	3 247	6	B	A	A	X	X	X
Heavy duty		2 400	1 710	2 488	5	D	D	D	D	D	C	
		2 660	1 840	2 576	5	D	D	D	C	C	B	
		2 840	1 940	2 671	5	D	D	D	C	B	B	
		3 310	2 190	2 973	6	C	C	B	B	A	X	
		3 600	2 060	3 124	6	C	B	B	A	X	X	
		3 820	2 160	3 219	6	B	B	A	X	X	X	
Bucket type		Capacity	Cutting width	Weight	Teeth	EC550EL wide retractable undercarriage						
						600 mm shoe, 10 600kg counterweight						
						6.5m ME boom			7.0 m boom			
						L	mm	kg	EA	2.55 m	3.0 m	2.55 m
Direct fit Buckets	General purpose	2 840	1 940	2 543	5	C	C	C	C	C	C	
		3 310	2 190	2 830	6	C	C	C	C	C	C	
		3 600	2 060	3 078	6	C	C	C	C	C	B	
		4 000	2 240	3 247	6	C	C	C	C	B	B	
	Heavy duty	4 200	2 325	3 465	6	C	C	C	B	B	A	
		2 400	1 710	2 488	5	D	D	D	D	D	D	
		2 660	1 840	2 576	5	D	D	D	D	D	D	
		2 840	1 940	2 671	5	D	D	D	D	D	D	
		3 310	2 190	2 973	6	D	D	D	D	D	C	
		3 600	2 060	3 124	6	D	D	D	C	C	B	
	3 820	2 160	3 219	6	D	D	C	C	B	B		
	Buckets with UQC	General purpose	2 840	1 940	2 543	5	C	C	C	C	C	C
			3 310	2 190	2 830	6	C	C	C	C	C	B
			3 600	2 060	3 078	6	C	C	C	C	B	A
4 000			2 240	3 247	6	C	C	B	B	A	A	
Heavy duty		4 200	2 325	3 465	6	C	B	B	A	A	x	
		2 400	1 710	2 488	5	D	D	D	D	D	D	
		2 660	1 840	2 576	5	D	D	D	D	D	D	
		2 840	1 940	2 671	5	D	D	D	D	D	C	
		3 310	2 190	2 973	6	D	D	D	C	C	B	
		3 600	2 060	3 124	6	D	C	C	B	B	A	
3 820		2 160	3 219	6	D	C	C	B	B	A		

Please consult with your Volvo dealer for the proper match of buckets and attachments to suit the application. The recommendations are given as a guide only, based on typical operation conditions. Bucket capacity based on ISO 7451, heaped material with a 1:1 angle of repose.

X : Not recommended
Maximum material density
D: 2 100 kg/m³
C: 1 800 kg/m³
B: 1 500 kg/m³
A: 1 200 kg/m³

Specifications



WORKING RANGE

Description	Unit	EC530E and EC550E					
Boom	m	6.5 ME		7.0 HD			
Arm	m	2.55	3.0	2.55	3.0	3.35	3.9
A. Max. digging reach	mm	10 970	11 330	11 490	11 850	12 180	12 680
B. Max. digging reach on ground	mm	10 690	11 060	11 220	11 590	11 930	12 430
C. Max. digging depth	mm	6 450	6 900	6 890	7 340	7 690	8 240
D. Max. digging depth (2.44 m level)	mm	6 280	6 750	6 720	7 190	7 550	8 110
E. Max. vertical wall digging depth	mm	5 680	5 850	5 980	6 090	6 410	6 840
F. Max. cutting height	mm	10 740	10 740	11 060	11 060	11 210	11 380
G. Max. dumping height	mm	7 100	7 160	7 450	7 510	7 760	7 850
H. Min. front slew radius	mm	4 810	4 780	5 210	5 170	5 140	5 050

DIGGING FORCES WITH DIRECT FIT BUCKET

Bucket radius	mm	1 965	1 965	1 840	1 840	1 840	1 840		
Breakout force - bucket	Normal	SAE J1179	kN	267	267	251	251	251	251
	Power boost	SAE J1179	kN	287	287	269	269	269	269
	Normal	ISO 6015	kN	307	307	287	287	287	287
	Power boost	ISO 6015	kN	329	329	308	308	308	308
Tearout force - dipper arm	Normal	SAE J1179	kN	247	227	258	236	220	196
	Power boost	SAE J1179	kN	265	243	277	253	235	210
	Normal	ISO 6015	kN	256	233	264	241	223	199
	Power boost	ISO 6015	kN	274	250	284	258	240	213
Rotation angle, bucket	°	168	168	178	178	178	178		

LIFTING CAPACITY EC530E

Lifting capacity at the arm end without bucket.

For lifting capacity including bucket, simply subtract actual weight of the direct fit bucket or the bucket with quick coupler from the following values.

	Lifting Point	1.5 m		3.0 m		4.5 m		6.0 m		7.5 m		9.0 m		10.5 m		Max. reach						
		Along UC	Across UC	Along UC	Across UC	Along UC	Across UC	Along UC	Across UC	Along UC	Across UC	Along UC	Across UC	Along UC	Across UC	Along UC	Across UC	m				
Boom: 6.5 m ME Arm: 2.55 m Shoe: 600 mm CWT: 10 600 kg	9.0 m kg																*13710	*13710	6.1			
	7.5 m kg																	*12460	*12460	7.4		
	6.0 m kg								*15460	*15460	*14090	12440						*12040	10660	8.2		
	4.5 m kg							*23390	*23390	*17640	16900	*15010	12090					*12100	9520	8.7		
	3.0 m kg								*19980	16060	*16180	11680						*12560	8990	9.0		
	1.5 m kg							*18660	*18660	*21670	15450	*17140	11330					*13500	8890	8.9		
	0 m kg							*28330	23320	*22260	15160	17370	11140					14190	9250	8.6		
	-1.5 m kg				*21630	*21630	*28310	23460	*21610	15150	*16880	11150						*15260	10210	8.0		
	-3.0 m kg				*32180	*32180	*25040	23850	*19280	15410								*15320	12330	7.1		
Boom: 6.5 m ME Arm: 3.0 m Shoe: 600 mm CWT: 10 600 kg	9.0 m kg																	*11410	*11410	6.6		
	7.5 m kg									*12870	12700							*10570	*10570	7.8		
	6.0 m kg									*13210	12510							*10290	9900	8.6		
	4.5 m kg						*21510	*21510	*16610	*16610	*14260	12110	*11970	9070				*10400	8890	9.1		
	3.0 m kg						*26640	24540	*19080	16100	*15540	11650	13530	8870				*10850	8400	9.3		
	1.5 m kg						*25960	23390	*21030	15400	*16660	11250	13320	8680				*11670	8290	9.3		
	0 m kg						*30000	23040	*21960	15010	17230	10990	13210	8580				*13090	8570	9.0		
	-1.5 m kg				*21810	*21810	*28870	23080	*21720	14910	*17020	10930						14490	9370	8.4		
	-3.0 m kg				*35110	*35110	*26170	23410	*19990	15090	*15060	11150						*14890	11070	7.5		
-4.5 m kg						*20920	*20920	*15290	*15290								*14610	*14610	6.2			
Boom: 7.0 m HD Arm: 2.55 m Shoe: 600 mm CWT: 10 600 kg	7.5 m kg									*13100	12640							*12630	11270	8.0		
	6.0 m kg									*13640	12390							*12280	9560	8.8		
	4.5 m kg									*17810	16580	*14760	11960	*13250	9070			*12350	8640	9.3		
	3.0 m kg								*20160	15710	*16000	11510	13490	8860				12460	8190	9.5		
	1.5 m kg								*21670	15150	*16970	11160	13290	8680				12390	8110	9.4		
	0 m kg							*16090	*16090	*22070	14910	17150	10960	13200	8600			12870	8400	9.2		
	-1.5 m kg							*27490	23190	*21410	14910	*16940	10940					14090	9160	8.6		
	-3.0 m kg				*30460	*30460	*24710	23550	*19500	15140	*15020	11170						*14180	10760	7.7		
	-4.5 m kg				*24240	*24240	*19790	*19790	*15120	*15120								*13550	*13550	6.4		
Boom: 7.0 m HD Arm: 3.0 m Shoe: 600 mm CWT: 10 600 kg	7.5 m kg																	*10710	10380	8.4		
	6.0 m kg									*12850	12440	*12170	9230					*10510	8900	9.2		
	4.5 m kg						*22740	*22740	*16800	16690	*14050	11970	*12600	9050				*10630	8080	9.6		
	3.0 m kg								*19280	15740	*15390	11470	*13260	8790				*11050	7660	9.8		
	1.5 m kg								*21070	15070	*16510	11060	13190	8570				11610	7570	9.8		
	0 m kg							*19930	*19930	*21810	14730	17000	10810	13040	8430			12000	7800	9.5		
	-1.5 m kg				*15900	*15900	*28200	22770	*21490	14660	16920	10740	13060	8450				13020	8430	9.0		
	-3.0 m kg				*28620	*28620	*25770	23090	*20020	14820	*15680	10870						*13730	9740	8.2		
	-4.5 m kg				*27510	*27510	*21530	*21530	*16670	15270								*13570	12580	6.9		
Boom: 7.0 m HD Arm: 3.35 m Shoe: 600 mm CWT: 10 600 kg	7.5 m kg																	*9400	*9400	8.8		
	6.0 m kg												*11710	9370				*9230	8470	9.5		
	4.5 m kg									*16180	*16180	*13650	12120	*12270	9150			*9320	7730	10.0		
	3.0 m kg								*22850	*22850	*18780	15980	*15070	11610	*13020	8880			*9670	7350	10.2	
	1.5 m kg								*16420	*16420	*20780	15250	*16310	11170	13250	8630			*10320	7260	10.1	
	0 m kg								*20970	*20970	*21780	14840	*17060	10880	13070	8470			*11370	7450	9.9	
	-1.5 m kg				*15720	*15720	*28880	22800	*21730	14720	16950	10770	13030	8430				12320	8000	9.4		
	-3.0 m kg				*20300	*20300	*26320	*26320	*26750	23060	*20560	14820	*16160	10840				*13360	9120	8.6		
	-4.5 m kg				*30200	*30200	*22960	*22960	*17760	15170								*13390	11440	7.4		
-6.0 m kg						*15870	*15870										*12290	*12290	5.6			
Boom: 7.0 m HD Arm: 3.9 m Shoe: 600 mm CWT: 10 600 kg	9.0 m kg																	*7930	*7930	8.4		
	7.5 m kg													*9860	9600				*7530	*7530	9.4	
	6.0 m kg													*10910	9480				*7410	*7410	10.1	
	4.5 m kg													*12820	12250				*7490	7140	10.5	
	3.0 m kg									*24690	*24690	*17710	16200	*14350	11690	*12450	8910	*9520	6990	*7750	6810	10.7
	1.5 m kg									*21740	*21740	*20000	15350	*15740	11200	13250	8620	*9960	6850	*8250	6710	10.6
	0 m kg									*22680	*22680	*21370	14830	*16710	10850	13010	8410			*9030	6860	10.4
	-1.5 m kg				*11000	*11000	*15430	*15430	*28930	22570	*21720	14600	16850	10660	12900	8300			*10270	7300	9.9	
	-3.0 m kg				*18010	*18010	*23640	*23640	*27750	22740	*21000	14620	*16520	10660	12980	8370			*12390	8190	9.2	
-4.5 m kg				*26130	*26130	*33650	*33650	*24650	23170	*18910	14870	*14560	10900					*12890	9940	8.1		
-6.0 m kg						*25190	*25190	*19020	*19020	*14120	*14120							*12560	*12560	6.4		

Notes:

1. Machine in "Fine Mode-F" (Power Boost) for lifting capacities.
2. The above loads are in compliance with SAE J1097 and ISO 10567 Hydraulic Excavator Lifting Capacity Standards.
3. Rated loads do not exceed 87% of hydraulic lifting capacity or 75% of tipping load.
4. Rated loads marked with an asterisk (*) are limited by hydraulic capacity rather than tipping load.

Specifications

LIFTING CAPACITY EC530E

Lifting capacity at the arm end without bucket.

For lifting capacity including bucket, simply subtract actual weight of the direct fit bucket or the bucket with quick coupler from the following values.

	Lifting Point	1.5 m		3.0 m		4.5 m		6.0 m		7.5 m		9.0 m		10.5 m		Max. reach		
		Along UC	Across UC	Along UC	Across UC	Along UC	Across UC	Along UC	Across UC	Along UC	Across UC	Along UC	Across UC	Along UC	Across UC	Along UC	Across UC	m
Boom: 6.5 m ME Arm: 2.55 m Shoe: 750 mm CWT: 10 600 kg	9.0 m kg															*13710	*13710	6.1
	7.5 m kg															*12460	*12460	7.4
	6.0 m kg							*15460	*15460	*14090	12600					*12040	10790	8.2
	4.5 m kg					*23390	*23390	*17640	17100	*15010	12240					*12100	9650	8.7
	3.0 m kg							*19980	16260	*16180	11830					*12560	9110	9.0
	1.5 m kg							*18660	*18660	*21670	15660	*17140	11490			*13500	9020	8.9
	0 m kg							*28330	23620	*22260	15370	*17520	11290			14390	9370	8.6
	-1.5 m kg			*21630	*21630	*28310	23760	*21610	15350	*16880	11300					*15260	10350	8.0
	-3.0 m kg			*32180	*32180	*25040	24160	*19280	15610							*15320	12490	7.1
Boom: 6.5 m ME Arm: 3.0 m Shoe: 750 mm CWT: 10 600 kg	9.0 m kg															*11410	*11410	6.6
	7.5 m kg									*12870	12850					*10570	*10570	7.8
	6.0 m kg									*13210	12670					*10290	10030	8.6
	4.5 m kg					*21510	*21510	*16610	*16610	*14260	12260	*11970	9200			*10400	9010	9.1
	3.0 m kg					*26640	24850	*19080	16310	*15540	11800	*13620	9000			*10850	8520	9.3
	1.5 m kg					*25960	23700	*21030	15600	*16660	11400	13510	8800			*11670	8410	9.3
	0 m kg							*30000	23350	*21960	15210	*17270	11150	*13240	8700	*13090	8700	9.0
	-1.5 m kg			*21810	*21810	*28870	23390	*21720	15120	*17020	11090					*14580	9500	8.4
	-3.0 m kg			*35110	*35110	*26170	23720	*19990	15300	*15060	11300					*14890	11220	7.5
-4.5 m kg					*20920	*20920	*15290	*15290							*14610	*14610	6.2	
Boom: 7.0 m HD Arm: 2.55 m Shoe: 750 mm CWT: 10 600 kg	7.5 m kg									*13100	12790					*12630	11410	8.0
	6.0 m kg									*13640	12540					*12280	9680	8.8
	4.5 m kg							*17810	16780	*14760	12120	*13250	9190			*12350	8760	9.3
	3.0 m kg							*20160	15920	*16000	11660	13680	8980			12630	8310	9.5
	1.5 m kg							*21670	15350	*16970	11310	13480	8800			12560	8230	9.4
	0 m kg							*16090	*16090	*22070	15110	*17370	11110	13390	8720	13050	8510	9.2
	-1.5 m kg							*27490	23500	*21410	15120	*16940	11100			*14120	9290	8.6
	-3.0 m kg			*30460	*30460	*24710	23860	*19500	15340	*15020	11320					*14180	10900	7.7
	-4.5 m kg			*24240	*24240	*19790	*19790	*15120	*15120							*13550	*13550	6.4
Boom: 7.0 m HD Arm: 3.0 m Shoe: 750 mm CWT: 10 600 kg	7.5 m kg															*10710	10510	8.4
	6.0 m kg									*12850	12590	*12170	9360			*10510	9020	9.2
	4.5 m kg					*22740	*22740	*16800	*16800	*14050	12120	*12600	9170			*10630	8190	9.6
	3.0 m kg							*19280	15950	*15390	11630	*13260	8920			*11050	7770	9.8
	1.5 m kg							*21070	15270	*16510	11220	13380	8690			11780	7680	9.8
	0 m kg							*19930	*19930	*21810	14930	*17100	10960	13230	8560	12180	7910	9.5
	-1.5 m kg			*15900	*15900	*28200	23080	*21490	14870	*16960	10890	13250	8580			13210	8550	9.0
	-3.0 m kg			*28620	*28620	*25770	23400	*20020	15030	*15680	11030					*13730	9870	8.2
	-4.5 m kg			*27510	*27510	*21530	*21530	*16670	15480							*13570	12750	6.9
Boom: 7.0 m HD Arm: 3.35 m Shoe: 750 mm CWT: 10 600 kg	7.5 m kg															*9400	*9400	8.8
	6.0 m kg											*11710	9490			*9230	8580	9.5
	4.5 m kg							*16180	*16180	*13650	12270	*12270	9280			*9320	7840	10.0
	3.0 m kg					*22850	*22850	*18780	16190	*15070	11760	*13020	9000			*9670	7460	10.2
	1.5 m kg					*16420	*16420	*20780	15450	*16310	11320	13440	8760			*10320	7370	10.1
	0 m kg					*20970	*20970	*21780	15050	*17060	11040	13260	8590			*11370	7560	9.9
	-1.5 m kg			*15720	*15720	*28880	23100	*21730	14920	*17110	10920	13220	8550			12500	8120	9.4
	-3.0 m kg	*20300	*20300	*26320	*26320	*26750	23370	*20560	15020	*16160	11000					*13360	9250	8.6
	-4.5 m kg			*30200	*30200	*22960	*22960	*17760	15380							*13390	11600	7.4
-6.0 m kg					*15870	*15870									*12290	*12290	5.6	
Boom: 7.0 m HD Arm: 3.9 m Shoe: 750 mm CWT: 10 600 kg	9.0 m kg															*7930	*7930	8.4
	7.5 m kg											*9860	9730			*7530	*7530	9.4
	6.0 m kg											*10910	9600			*7410	*7410	10.1
	4.5 m kg									*12820	12400	*11590	9340			*7490	7250	10.5
	3.0 m kg					*24690	*24690	*17710	16400	*14350	11850	*12450	9030	*9520	7100	*7750	6910	10.7
	1.5 m kg					*21740	*21740	*20000	15560	*15740	11350	*13270	8740	*9960	6960	*8250	6810	10.6
	0 m kg					*22680	*22680	*21370	15030	*16710	11000	13200	8530			*9030	6960	10.4
	-1.5 m kg	*11000	*11000	*15430	*15430	*28930	22880	*21720	14800	*17040	10820	13090	8430			*10270	7410	9.9
	-3.0 m kg	*18010	*18010	*23640	*23640	*27750	23050	*21000	14820	*16520	10820	*13060	8500			*12390	8310	9.2
-4.5 m kg	*26130	*26130	*33650	*33650	*24650	23480	*18910	15080	*14560	11050					*12890	10080	8.1	
-6.0 m kg			*25190	*25190	*19020	*19020	*14120	*14120							*12560	*12560	6.4	

Notes:

- Machine in "Fine Mode-F" (Power Boost) for lifting capacities.
- The above loads are in compliance with SAE J1097 and ISO 10567 Hydraulic Excavator Lifting Capacity Standards.
- Rated loads do not exceed 87% of hydraulic lifting capacity or 75% of tipping load.
- Rated loads marked with an asterisk (*) are limited by hydraulic capacity rather than tipping load.

Specifications

LIFTING CAPACITY EC550E

Lifting capacity at the arm end without bucket.

For lifting capacity including bucket, simply subtract actual weight of the direct fit bucket or the bucket with quick coupler from the following values.

	Lifting Point	1.5 m		3.0 m		4.5 m		6.0 m		7.5 m		9.0 m		10.5 m		Max. reach					
		Along UC	Across UC	Along UC	Across UC	Along UC	Across UC	Along UC	Across UC	Along UC	Across UC	Along UC	Across UC	Along UC	Across UC	Along UC	Across UC	m			
Boom: 6.5 m ME Arm: 2.55 m Shoe: 750 mm CWT: 10 600 kg	9.0 m kg																*13710	*13710	6.1		
	7.5 m kg																	*12460	*12460	7.4	
	6.0 m kg								*15460	*15460	*14090	*14090						*12040	*12040	8.2	
	4.5 m kg							*23390	*23390	*17640	*17640	*15010	14220					*12100	11200	8.7	
	3.0 m kg								*19980	19140	*16180	13790						*12560	10600	9.0	
	1.5 m kg							*18660	*18660	*21670	18500	*17140	13440					*13500	10510	8.9	
	0 m kg							*28330	*28330	*22260	18200	*17520	13240					*14930	10940	8.6	
	-1.5 m kg			*21630	*21630	*28310	*28310	*21610	18180	*16880	13250							*15260	12090	8.0	
	-3.0 m kg			*32180	*32180	*25040	*25040	*19280	18450									*15320	14630	7.1	
Boom: 6.5 m ME Arm: 3.0 m Shoe: 750 mm CWT: 10 600 kg	9.0 m kg																	*11410	*11410	6.6	
	7.5 m kg									*12870	*12870							*10570	*10570	7.8	
	6.0 m kg									*13210	*13210							*10290	*10290	8.6	
	4.5 m kg						*21510	*21510	*16610	*16610	*14260	14250	*11970	10680				*10400	*10400	9.1	
	3.0 m kg						*26640	*26640	*19080	*19080	*15540	13770	*13620	10480				*10850	9920	9.3	
	1.5 m kg						*25960	*25960	*21030	18450	*16660	13360	*14110	10280				*11670	9820	9.3	
	0 m kg						*30000	28340	*21960	18040	*17270	13090	*13240	10180				*13090	10170	9.0	
	-1.5 m kg			*21810	*21810	*28870	28380	*21720	17950	*17020	13030							*14580	11120	8.4	
	-3.0 m kg			*35110	*35110	*26170	*26170	*19990	18130	*15060	13260							*14890	13150	7.5	
Boom: 7.0 m HD Arm: 2.55 m Shoe: 750 mm CWT: 10 600 kg	7.5 m kg									*13100	*13100							*12630	*12630	8.0	
	6.0 m kg									*13640	*13640							*12280	11220	8.8	
	4.5 m kg								*17810	*17810	*14760	14090	*13250	10670				*12350	10170	9.3	
	3.0 m kg								*20160	18770	*16000	13620	*13770	10460				*12790	9670	9.5	
	1.5 m kg								*21670	18170	*16970	13250	14110	10270				13150	9600	9.4	
	0 m kg							*16090	*16090	*22070	17920	*17370	13050	14020	10180				13670	9940	9.2
	-1.5 m kg							*27490	*27490	*21410	17930	*16940	13030					*14120	10850	8.6	
	-3.0 m kg			*30460	*30460	*24710	*24710	*19500	18160	*15020	13270							*14180	12750	7.7	
	-4.5 m kg			*24240	*24240	*19790	*19790	*15120	*15120									*13550	*13550	6.4	
Boom: 7.0 m HD Arm: 3.0 m Shoe: 750 mm CWT: 10 600 kg	7.5 m kg																	*10710	*10710	8.4	
	6.0 m kg									*12850	*12850	*12170	10850					*10510	10460	9.2	
	4.5 m kg						*22740	*22740	*16800	*16800	*14050	*14050	*12600	10650				*10630	9530	9.6	
	3.0 m kg								*19280	18810	*15390	13590	*13260	10390				*11050	9070	9.8	
	1.5 m kg								*21070	18100	*16510	13160	*13850	10160				*11830	8980	9.8	
	0 m kg							*19930	*19930	*21810	17740	*17100	12900	13860	10020				12760	9260	9.5
	-1.5 m kg			*15900	*15900	*28200	28040	*21490	17680	*16960	12820	*13550	10040					*13490	10010	9.0	
	-3.0 m kg			*28620	*28620	*25770	*25770	*20020	17850	*15680	12970							*13730	11570	8.2	
	-4.5 m kg			*27510	*27510	*21530	*21530	*16670	*16670									*13570	*13570	6.9	
Boom: 7.0 m HD Arm: 3.35 m Shoe: 750 mm CWT: 10 600 kg	7.5 m kg																	*9400	*9400	8.8	
	6.0 m kg												*11710	10990				*9230	*9230	9.5	
	4.5 m kg								*16180	*16180	*13650	*13650	*12270	10760				*9320	9110	10.0	
	3.0 m kg						*22850	*22850	*18780	*18780	*15070	13730	*13020	10480				*9670	8690	10.2	
	1.5 m kg						*16420	*16420	*20780	18290	*16310	13270	*13700	10230				*10320	8600	10.1	
	0 m kg						*20970	*20970	*21780	17860	*17060	12970	13900	10060				*11370	8840	9.9	
	-1.5 m kg			*15720	*15720	*28880	28060	*21730	17730	*17110	12850	*13850	10020					*13060	9500	9.4	
	-3.0 m kg	*20300	*20300	*26320	*26320	*26750	*26750	*20560	17840	*16160	12930							*13360	10830	8.6	
	-4.5 m kg			*30200	*30200	*22960	*22960	*17760	*17760									*13390	*13390	7.4	
-6.0 m kg					*15870	*15870											*12290	*12290	5.6		
Boom: 7.0 m HD Arm: 3.9 m Shoe: 750 mm CWT: 10 600 kg	9.0 m kg																	*7930	*7930	8.4	
	7.5 m kg												*9860	*9860				*7530	*7530	9.4	
	6.0 m kg												*10910	*10910				*7410	*7410	10.1	
	4.5 m kg											*12820	*12820	*11590	10830				*7490	*7490	10.5
	3.0 m kg						*24690	*24690	*17170	*17170	*14350	13820	*12450	10510	*9520	8280		*7750	*7750	10.7	
	1.5 m kg						*21740	*21740	*20000	18400	*15740	13310	*13270	10220	*9960	8140		*8250	7970	10.6	
	0 m kg						*22680	*22680	*21370	17850	*16710	12940	*13830	10000				*9030	8160	10.4	
	-1.5 m kg	*11000	*11000	*15430	*15430	*28930	27830	*21720	17610	*17040	12750	13730	9890					*10270	8690	9.9	
	-3.0 m kg	*18010	*18010	*23640	*23640	*27750	*27750	*21000	17630	*16520	12750	*13060	9960					*12390	9740	9.2	
-4.5 m kg	*26130	*26130	*33650	*33650	*24650	*24650	*18910	17900	*14560	12990							*12890	11810	8.1		
-6.0 m kg			*25190	*25190	*19020	*19020	*14120	*14120									*12560	*12560	6.4		

Notes:

1. Machine in "Fine Mode-F" (Power Boost) for lifting capacities.
2. The above loads are in compliance with SAE J1097 and ISO 10567 Hydraulic Excavator Lifting Capacity Standards.
3. Rated loads do not exceed 87% of hydraulic lifting capacity or 75% of tipping load.
4. Rated loads marked with an asterisk (*) are limited by hydraulic capacity rather than tipping load.

Equipment

STANDARD EQUIPMENT			
	EC530E	EC550E	
Engine			
Turbocharged, 4 stroke diesel engine with water cooling, direct injection and charged air cooler that meets EU Stage V requirements	•	•	
Air filter with indicator	•	•	
Air intake heater	•	•	
Cyclone pre-cleaner	•	•	
Electric engine shut-off	•	•	
Fuel filter and water separator	•	•	
Fuel filler pump: 50 l/min, with automatic shut-off	•	•	
Alternator, 80 A	•	•	
Electric / Electronic control system			
Advanced mode control system	•	•	
Self-diagnostic system	•	•	
Machine status indication	•	•	
Engine speed sensing power control	•	•	
Automatic idling system	•	•	
One-touch power boost	•	•	
Safety stop/start function	•	•	
Adjustable LCD color monitor	•	•	
Master electrical disconnect switch	•	•	
Engine restart prevention circuit	•	•	
High-capacity halogen lights:	•	•	
Frame-mounted 2	•	•	
Boom-mounted 2	•	•	
Batteries, 2 x 12 V / 200 Ah	•	•	
Start motor, 24 V / 7 kW	•	•	
Frame			
3-point right-hand side access	•	•	
Full height, foldable handrail and guard rail	•	•	
Tool storage area	•	•	
Punched metal anti-slip plates	•	•	
Undercover (heavy-duty)	•	•	
Undercarriage			
Mechanically retractable wide width track gauge	–	•	
Mechanically retractable width track gauge	•	–	
Undercover (heavy-duty)	•	•	
Hydraulic track adjusters	•	•	
Greased and sealed track link	•	•	
Track Guard	•	•	
Hydraulic system			
New electro-hydraulic system with IMVT	•	•	
Hose rupture valve: boom, Arm	•	•	
Overload warning device	•	•	
2-pump flow bucket circuit	•	•	
Swing anti-rebound valves	•	•	
Boom and arm holding valves	•	•	
Multi-stage filtering system	•	•	
Cylinder cushioning	•	•	
Cylinder contamination seals	•	•	
Auxiliary hydraulic valve	•	•	
Automatic two-speed travel motors	•	•	
Hydraulic oil, ISO VG 46	•	•	
Automatic hydraulic oil warm-up	•	•	

STANDARD EQUIPMENT			
	EC530E	EC550E	
Cab and interior			
ROPS (ISO12117-2) certified cab	•	•	
Silicon oil and rubber mounts with spring	•	•	
Travel pedals and hand levers	•	•	
Adjustable operator seat and joystick control console	•	•	
Control joysticks with 4 switches each	•	•	
Heater & air-conditioner, automatic	•	•	
Flexible antenna	•	•	
Radio with MP3 & USB Jack with bluetooth	•	•	
Hydraulic safety lock lever	•	•	
Cab, all-weather sound suppressed, includes:	•	•	
- Cup holders	•	•	
- Door locks	•	•	
- Tinted glass	•	•	
- Floor mat	•	•	
- Horn	•	•	
- Large storage area	•	•	
- Pull-up type front window	•	•	
- Removable lower windshield	•	•	
- Seat belt	•	•	
- Safety glass	•	•	
- Sun screens, front, roof, rear	•	•	
- Rain shield	•	•	
- Windshield wiper with intermittent feature	•	•	
- Rear and side view camera	•	•	
- Master key	•	•	
Track shoes			
600 mm with double grousers	•	•	
Digging equipment			
Boom: 7.0 m HD	•	•	
Arm: 3.35 m HD	•	•	
Manual centralized lubrication	•	•	

Equipment

OPTIONAL EQUIPMENT		
	EC530E	EC550E
Engine		
Block heater: 120 V, 240 V	•	•
Oil bath pre-cleaner	•	•
Diesel coolant heater, 10 kW	•	•
Water separator with heater	•	•
Auto engine shutdown	•	•
Delayed engine Shutdown	•	•
Reversible fan drive	•	•
Fuel tank-fast fuel fill preparation	•	•
Electric		
Extra work lights: Halogen or LED :	•	•
- Cab-mounted 3	•	•
- Boom-mounted 2	•	•
- Counterweight-mounted 1	•	•
Travel alarm	•	•
Anti-theft system	•	•
Flashing beacon, LED	•	•
Green light beacon	•	•
Jump start connector, NATO	•	•
Dig Assist : 2D, In-Field Design and 3D	•	•
On-Board Weighing	•	•
Volvo Smart View	•	•
Frame		
Hydraulic removable counterweight	•	•
Service walk way, foldable	•	•
Cab entrance, foldable	•	•
Undercarriage		
Full track guard	•	•
Hydraulic system		
Boom float function	•	•
Hydraulic piping:	•	•
- Work tool management system (up to 32 programmable memories)	•	•
Hammer & shear:	•	•
- 1 and 2 pump flow	•	•
- Variable flow and pressure pre-setting	•	•
- Additional return filter	•	•
Slope & rotator	•	•
Grapple	•	•
Oil leak (drain) line	•	•
Quick coupler piping	•	•
Volvo hydraulic quick coupler S3	•	•
Volvo hydraulic quick coupler VQC-HU	•	•
Hydraulic oil, ISO VG 32	•	•
Hydraulic oil, ISO VG 46	•	•
Hydraulic oil, ISO VG 68	•	•
Hydraulic oil, biodegradable 46	•	•
Hydraulic oil, longlife oil 32	•	•
Hydraulic oil, longlife oil 46	•	•
Hydraulic oil, longlife oil 68	•	•

OPTIONAL EQUIPMENT		
	EC530E	EC550E
Cab and interior		
Fabric seat with heater	•	•
Fabric seat with heater and air suspension	•	•
Delux seat with multiple adjusting arm rest	•	•
Joystick pattern change	•	•
Comfort Driving Control	•	•
Creep travel speed	•	•
Opening top hatch	•	•
Falling object guard (FOG) :	•	•
- Frame-mounted	•	•
- Cab-mounted	•	•
Cab-mounted falling object protective structure (FOPS)	•	•
Smoker kit (ashtray and lighter)	•	•
Safety net for front window	•	•
Safety net for lower front window	•	•
Lower wiper with intermittent control	•	•
Anti-vandalism kit	•	•
Specific key	•	•
One piece front window	•	•
High visibility cab	•	•
Track shoes		
Track shoes 600/750/900 mm with triple grousers	•	•
Track shoes 600 mm with double grousers	•	•
Digging equipment		
Boom: 6.5 m ME	•	•
Arm: 2.55 m, 3.0 m, 3.9 m	•	•
Linkage with lifting eye	•	•
Service		
Tool kit, daily maintenance	•	•
Tool kit, full scale	•	•
Automatic lubrication system	•	•
Cleaning air gun	•	•
Air pressure supply in cabin	•	•
Caretrack	•	•

SELECTION OF VOLVO OPTIONAL EQUIPMENT

Deluxe seat



Climate control with HEPA filter



Reversible cooling fan



Foldable walkway



Fast fuel filling preparation



Dig Assist apps, powered by Volvo Co-Pilot



Not all products are available in all markets. Under our policy of continuous improvement, we reserve the right to change specifications and design without prior notice. The illustrations do not necessarily show the standard version of the machine.



VOLVO

Volvo Construction Equipment
volvoce.com