

SENEBOGEN

PRELIMINARY

MATERIAL HANDLER

822G



 Mobile 22 t /  Crawler 24,3 t /  10 m /  110 kW /  Stage V



822 G

The recycling specialist.

Robust solution for harsh environments – with a reach of up to 10 m and an elevating comfort cab as standard across the series, the compact 822 G material handler is the specialist for recycling and scrap. Keep track of all loading and sorting activities and benefit sustainably from the machine's intelligent and resource-saving design.

Maximum efficiency

High system performance coupled with optimized hydraulics for outstanding efficiency.

Occupational safety

Thanks to the precisely controlled movements and the numerous safety features, you can work effortlessly and safely throughout your day.

Maximum comfort

The spacious cab is designed with the needs of the operator in mind – comfortable and spacious with sophisticated features.

A long-term investment

The G-series is characterized by robust components and intelligent machine design – the machine retains its value over the long-term, even with demanding continuous use.

Maintenance & service

Intelligent fleet management and machine status monitoring via the SENtrack portal as well as unique accessibility of machine components.

Modular variety

Unique machine variety – we build the perfect machine to meet the needs of your application.



AN INVESTMENT THAT PAYS OFF.

The durability and reliability of the SENNEBOGEN Green Line is based on decades of experience in the design of high-quality crane and material handling technology. You want to handle recycling in an especially environmentally friendly and economical way – we have the perfect solution for you.



Low operating costs thanks to Green Efficiency Technology: fuel efficient and longer maintenance intervals



Manageable and service-friendly technology for maximum machine availability



Consistent performance thanks to robust steel construction, and high-quality drive and control components from renowned manufacturers



Maximum efficiency thanks to powerful pumps, large-scale hydraulic valves and pipes



Sophisticated technology thanks to the consistent further development up to the 6th generation, the G-series – for demanding material handling



Durable and robust in extreme weather and harsh operating conditions, works equally well in the cold of the Arctic Circle or the heat of Dubai

LATEST GENERATION MATERIAL HANDLING TECHNOLOGY

The **G** series.



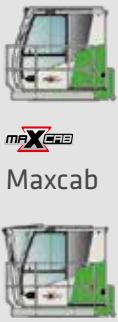
A MODULAR DESIGN. NUMEROUS APPLICATIONS.

EQUIPMENT



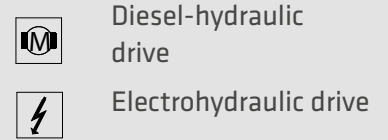
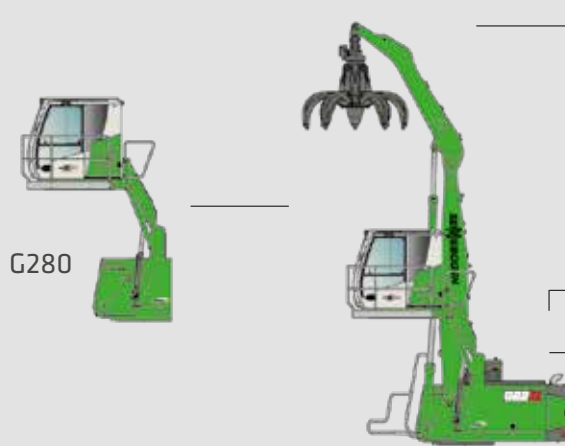
K = Compact boom
ULM = Equipment with tipping kinematics, e.g. for sorting grabs

CAB

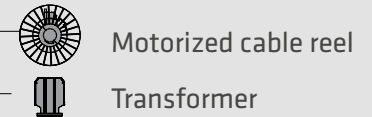


Maxcab
Maxcab Industry

CAB ELEVATION

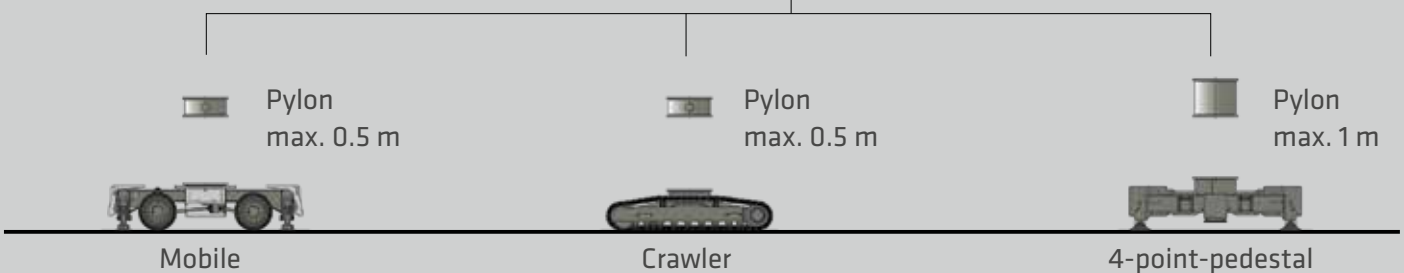


OPTIONS



UPPERCARRIAGE

UNDERCARRIAGE



WHAT DOES YOUR MACHINE LOOK LIKE?

Configure your individual machine from our modular system. The great variety of solutions that we can implement in this way is unique anywhere in the world.



CUSTOM CONFIGURATION

More than 16,000 unique material handling solutions can be delivered through SENNEBOGEN's modular machine design – watch the video now!

→ www.sennebogen.com/versatility

MAXIMUM COMFORT.



Everything in view

The spacious cab with panoramic view gives you a practical overview of your work area. The safety cameras provide support and allow you to monitor the critical areas conveniently via the monitoring system in the cab.

Pleasant indoor climate

Whether in warmer areas or sub-zero temperatures, you can enter a work space with a comfortable temperature every day and concentrate on the essentials of work thanks to pleasant heating and air conditioning.

For your health

The back-friendly comfort seat with reinforced suspension, adjustable armrests and optimally arranged control elements make everyday work even easier. With the convenient control panel, you can now reach many functions even faster and the ergonomic joysticks are comfortable to hold – in an award-winning design!

Easy control

The intelligent SENCON control system gives you quick and easy feedback on the machine's condition. Thanks to the intuitive user interface, it has never been easier to monitor energy consumption and utilization, control the desired working modes and contribute towards reducing operating costs.

Individual operator profiles

Personalize and save settings for individual operators: climb in – get going.

“With the new Maxcab, we have once again implemented customer requirements: for maximum ease of use.”

CORNELIUS STROBL,
Head of the Scrap and
Recycling Business Unit





THE NEW MAXCAB

- Unobstructed visibility
- Bullet proof windscreen in series
- Intuitive operation



**G SERIES
STANDARD
EQUIPMENT**

PROFESSIONAL FLEET MANAGEMENT

SENtrack



1. Reduce service costs

The dashboard is used to monitor the machine and its main operating parameters (temperatures, consumption). If key figures deviate significantly from the target value, the user is informed immediately.

2. Reduce consumption

You will receive daily updated insights into your fleet processes: easily identify and optimize times when machines are idle or change set parameters when machines are underloaded to reduce consumption.

3. Improve productivity

With just a few clicks, you can identify and optimize machine capacity, analyze routes if required and thus make your port processes more profitable.

4. Safeguard your investment

Practical alarm messages inform you about critical machine conditions. In the event of irregular movements, the machine can also easily be deactivated remotely.

“What if you could receive real-time data from all your machines with just one click and so increase your productivity? SENNEBOGEN’s SENtrack telematic system makes this possible. The monitoring tool is now installed as standard in the G series!”



MAINTENANCE AND SERVICE.

KEEP IT SIMPLE. WITH MANAGEABLE TECHNOLOGY.



Reliable and practical technology makes life easier. We rely on hydraulics, electrics and electronics only where they provide the greatest benefit.



We make you happy, not reliant. With cost-effective components and fewer process steps, you can take care of your own machine.



The central electrical distributors and electronic modules facilitate maintenance and service, and are protected against environmental influences thanks to the large-scale e-box.



The SENCON control system supports you with diagnostics so that your machine is back in action more quickly.



All maintenance and service points are clearly arranged and easily accessible. The clear labeling of components makes finding your way around easy.

TECHNICAL DATA, EQUIPMENT

MACHINE TYPE

MODEL (TYPE) 822 G

DIESEL ENGINE

TYPE	Stage V: Cummins B 3.8* Rated power: 110kW/2200 rpm Operating point standard: 106 kW/1800 rpm Operating point ECO: 99 kW/1600 rpm Automatic idle/stop
COOLING	Water-cooled, charge air cooling, coolant cooling
DISPLACEMENT	3.8 l
NUMBER OF CYLINDERS	4
BATTERIES	2 x 110 Ah / 750 A, battery disconnect switch
ELECTRICAL SYSTEM	24 V
OPTIONS	Engine block heater Electric fuel pump Jump start pole Cyclone pre-separator for use with high dust loads

TANK CAPACITIES

FUEL	330 l
ADBLUE	30 l
HYDRAULIC TANK	220 l
COOLANT	approx. 40 l
ENGINE OIL	approx. 13.5 l
CENTRAL LUBRICATION SYSTEM	Automatic central lubrication for equipment and slewing ring, display of fault and empty message via SENCON

UPPERCARRIAGE

DESIGN	Torsion-resistant box design, precision crafted, steel bushings for boom mounting. Very service-friendly design, engine installed in the longitudinal direction
COOLING SYSTEM	Cooling system with 3 cooling circuits and demand-driven fan control consisting of: coolant cooling and hydraulic oil cooling, hydraulically driven, thermostatically controlled incl. fan reversal; charge air cooling driven directly by engine
OPTIONS	LED lighting package Swing bearing brake via foot pedal Fire extinguisher Low temperature packages Electrical Hydraulic tank preheating 9 kW magnetic generator Additional ballast 1 t to 2 t Comprehensive uppercarriage railings Platform with railing next to cab Warning beacons and alarm horns

Battery disconnecter conveniently accessible on operator's seat



TECHNICAL DATA, EQUIPMENT

HYDRAULIC SYSTEM

Load-sensing / LUDV hydraulic system, electro-hydraulic work functions

OPERATING PRESSURE up to 350 bar

CONTROL SYSTEM Proportional, precision electrical control of work movements, 2 electric joysticks for work functions, additional functions via switches and foot pedals

SAFETY Hydraulic circuits safeguarded with safety valves

Pipe-fracture safety valve for stick and compact boom as standard

Emergency lowering of the equipment in case of engine standstill

OPTIONS Bio-oil filling

Tool Control for programming pressure/ rate of up to 10 tools

Load torque warning with capacity display

Overload safeguard with shutdown

SENNEBOGEN HydroClean micro-filter system (3 µm) with water separator

Supplementary hydraulic circuit for shear attachment

SLEWING DRIVE

GEARBOX Planetary gears with axial piston engine, integrated brake valves

PARKING BRAKE Spring-loaded, hydraulically ventilated multi-disk safety brake

SLEWING RING Internal toothing, strong ball bearing slewing ring, sealed

SLEWING SPEED 0-8 rpm

TORQUE 53 kNm



Folding lubrication system for easy maintenance





Particularly gentle movement of the cab thanks to cab elevation G280



TECHNICAL DATA, EQUIPMENT

CAB* 	
CAB TYPE	Maxcab, 2.8 m elevation 
CAB FEATURES	Sliding door incl. sliding window, vibration-damped, tinted safety glass, bullet proof glass on windscreen, safety glass on side windows, skylight, windscreen wiper, roller sunblind on windscreen and skylight, integrated microphone for hands-free system, radio preparation, air-suspended comfort seat, heating/air-conditioning system with fresh air filter and recirculating air filter, joystick steering (mobile version), SENCON
OPTIONS	<ul style="list-style-type: none"> Maxcab Industry, continuous bullet proof glass pane Protective roof guard, FOPS if applicable Protective front guard Active carbon filter for outside air Auxiliary heating system Air-conditioned comfort operator's seat Radio (DAB), with MP3 and Bluetooth® function, hands-free system Cooling box Multifunctional armrests Pressurized cab Steering wheel control 30° tiltable cab External operator panel Sun protection packages

UNDERCARRIAGE 	
MOBILE	MP21 mobile undercarriage with integrated 4-point outrigger, steering axle with automated pendulum axle, pendulum axle cylinder with pipe fracture safety valve, all-wheel drive powered by an adjustable hydraulic motor with external, automatically actuated brake valve and 2-stage power shift transmission, planetary axles with integrated steering cylinders, 1-way accelerator pedal, service brake with 2-circuit system, multi-disc brake as parking brake
TIRE TYPE	8 x 10.00-20
BRAKES	hydraulic
TRAVEL SPEED	0-20 km/h variable
OPTION	<ul style="list-style-type: none"> up to 0.5 m pylon Support plate Stabilizer blade

CRAWLER 	
	R25/240 crawler undercarriage in stable, torsionally rigid box construction with hydraulic travel drive, hydraulically ventilated, spring-loaded multi-disc brake as parking brake
TRAVEL SPEED	0-2.4 km/h
OPTION	<ul style="list-style-type: none"> up to 0.5 m pylon 700 mm triple grouser shoes



TECHNICAL DATA, EQUIPMENT

EQUIPMENT



RANGE	up to 10 m
CYLINDERS	Hydraulic cylinders with high-quality sealing and guide elements, end position damping, sealed mounting points
OPTIONS	<ul style="list-style-type: none"> LED lighting Adjustable lift limitation / stick limitation Stick mounted camera Equipment type "ULM" with tipping kinematics Boom damping

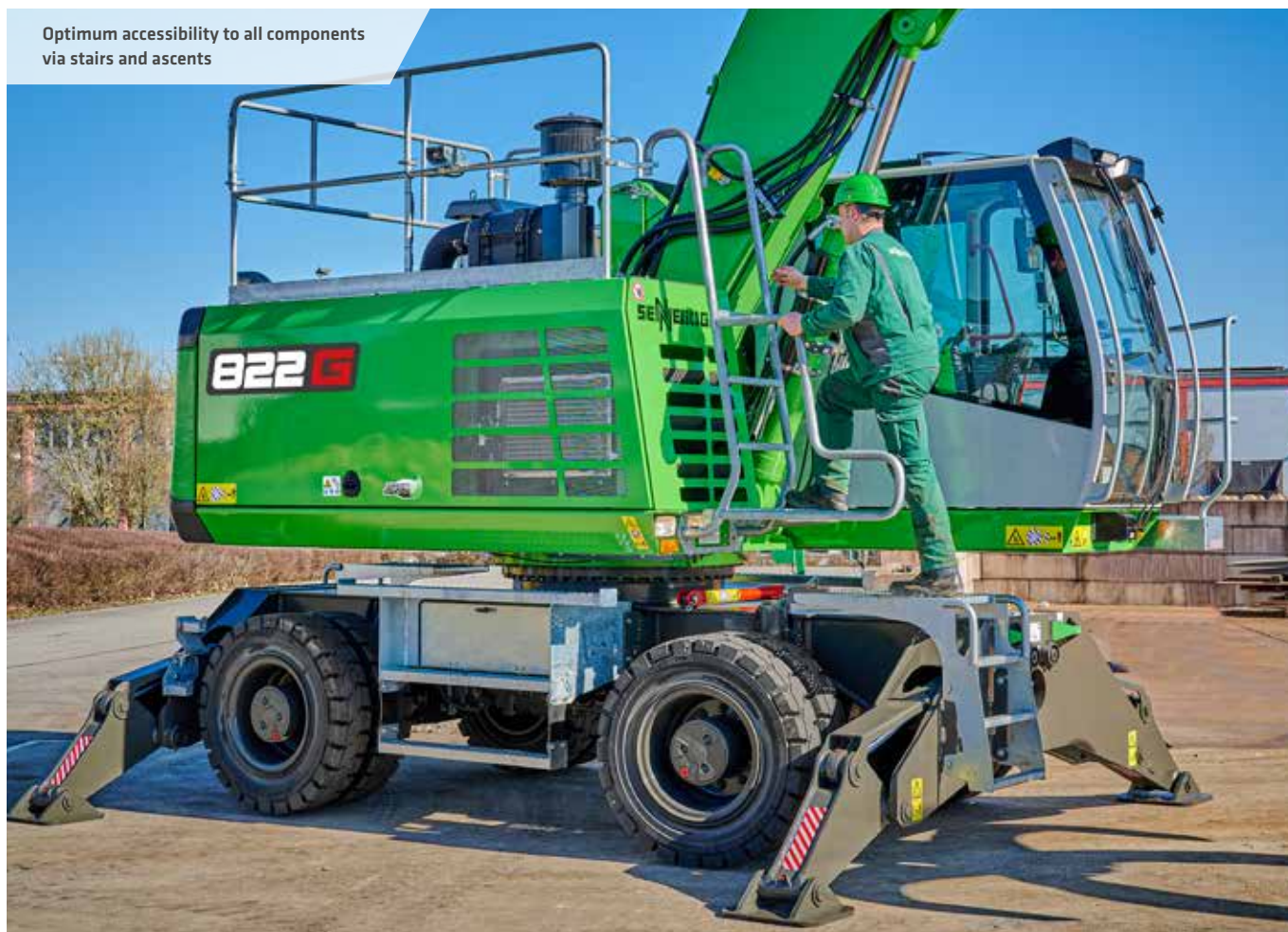
OPERATING WEIGHT



MASS	<p>Mobile:</p> <p>23,0 t with MP21 and K9 incl. attachment</p> <p>Crawler</p> <p>25,3 t with R25/240 and K9 incl. attachment</p>
------	--

NOTE	Operating weight varies by model and equipment.
------	---

Optimum accessibility to all components via stairs and ascents



LOAD RATINGS K9 (MOBILE)



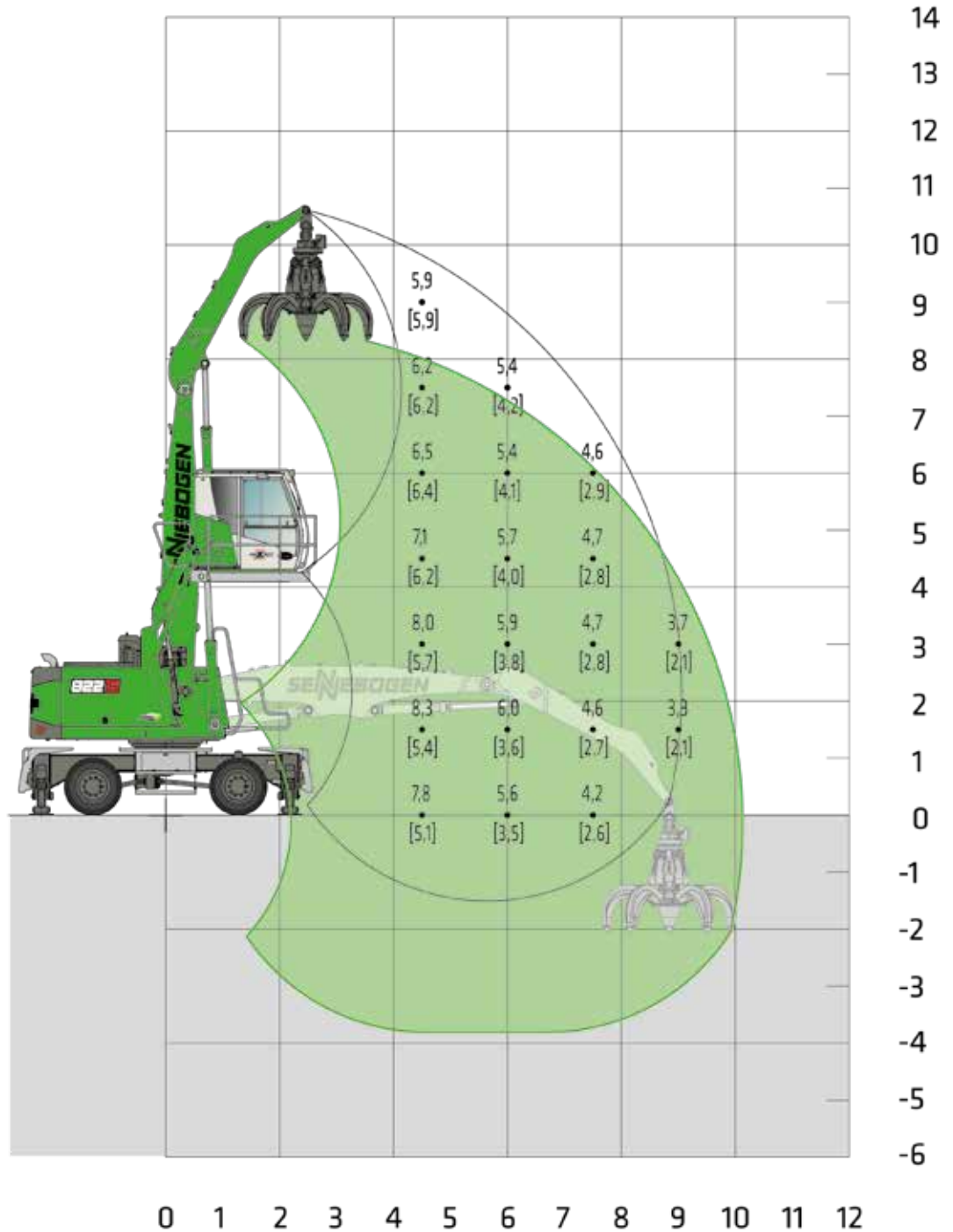
MP21



MAXCAB
2.80 m elevating (G280)



5.3 m boom
3.8 m grab stick



Machine shown
in mirror image

LOAD RATINGS

20220406110645
[20220406111237]

Notes:

All load ratings are given in tons (t) brought to bear at the end of the stick, without tools on firm level ground. Working tools such as grab, magnet, load hook etc. are included in the specified load ratings. The stated values are 75 % of the static tipping load or 87 % of the hydraulic lifting force according to ISO10567. According to EU standard EN 474/5, hydraulic material handlers used for hoisting must be equipped with a pipe rupture safety device on lifting and stick cylinders and an overload warning device. Load ratings apply to a machine with 4-point outrigger and for 360° slewing. The load ratings in brackets [] apply when the oscillating axle is blocked, unsupported, (free-standing) and for 360° slewing.

LOAD RATINGS K9 ULM (MOBILE)



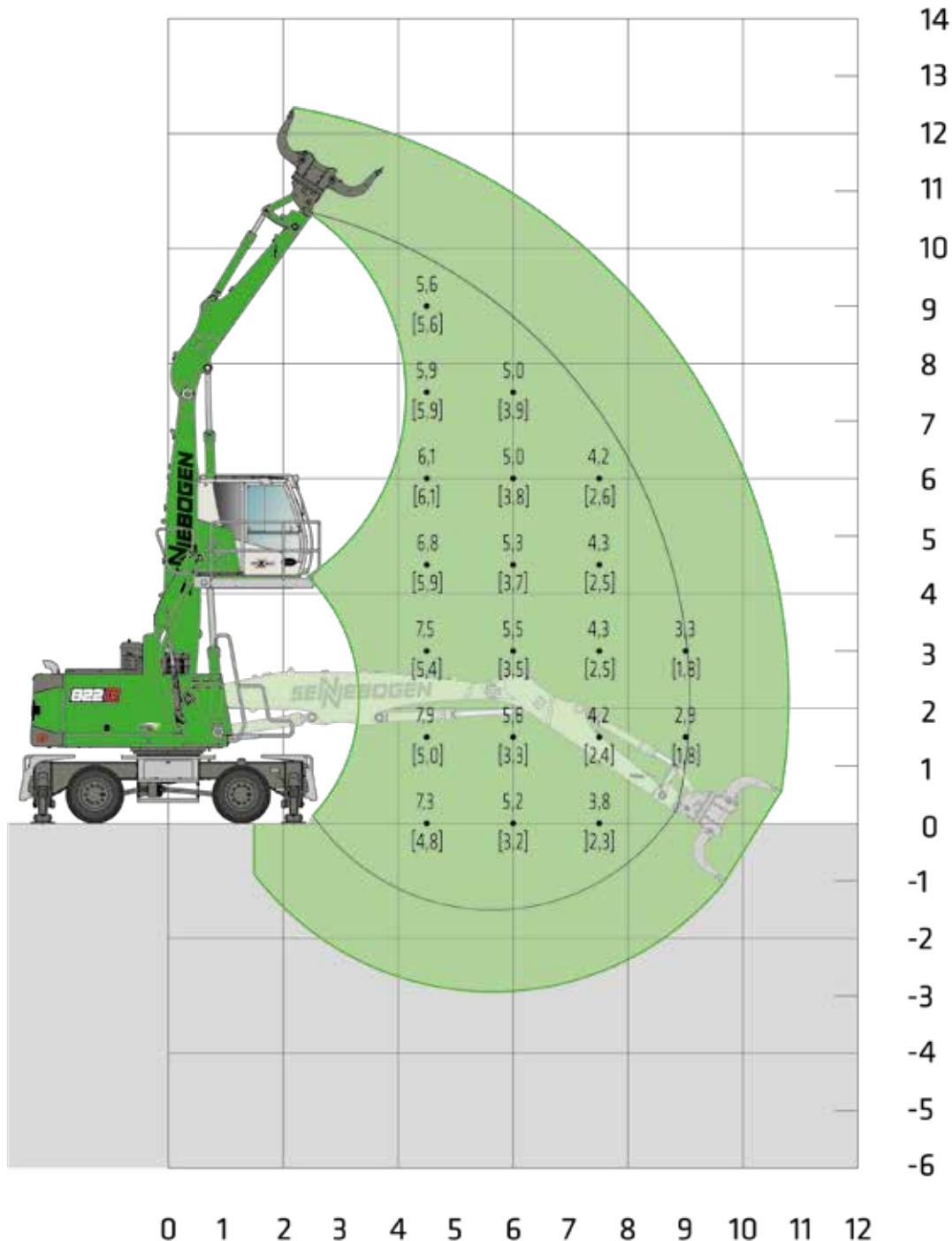
MP21



MAXCAB
2.80 m elevating (G280)



5.3 m boom
3.8 m grab stick



Machine shown in mirror image

20220406112317
[20220406112546]

Notes:

All load ratings are given in tons (t) brought to bear at the end of the stick, without tools on firm level ground. Working tools such as grab, magnet, load hook etc. are included in the specified load ratings. The stated values are 75 % of the static tipping load or 87 % of the hydraulic lifting force according to ISO10567. According to EU standard EN 474/5, hydraulic material handlers used for hoisting must be equipped with a pipe rupture safety device on lifting and stick cylinders and an overload warning device. Load ratings apply to a machine with 4-point outrigger and for 360° slewing. The load ratings in brackets [] apply when the oscillating axle is blocked, unsupported, (free-standing) and for 360° slewing.

LOAD RATINGS K10 (MOBILE)



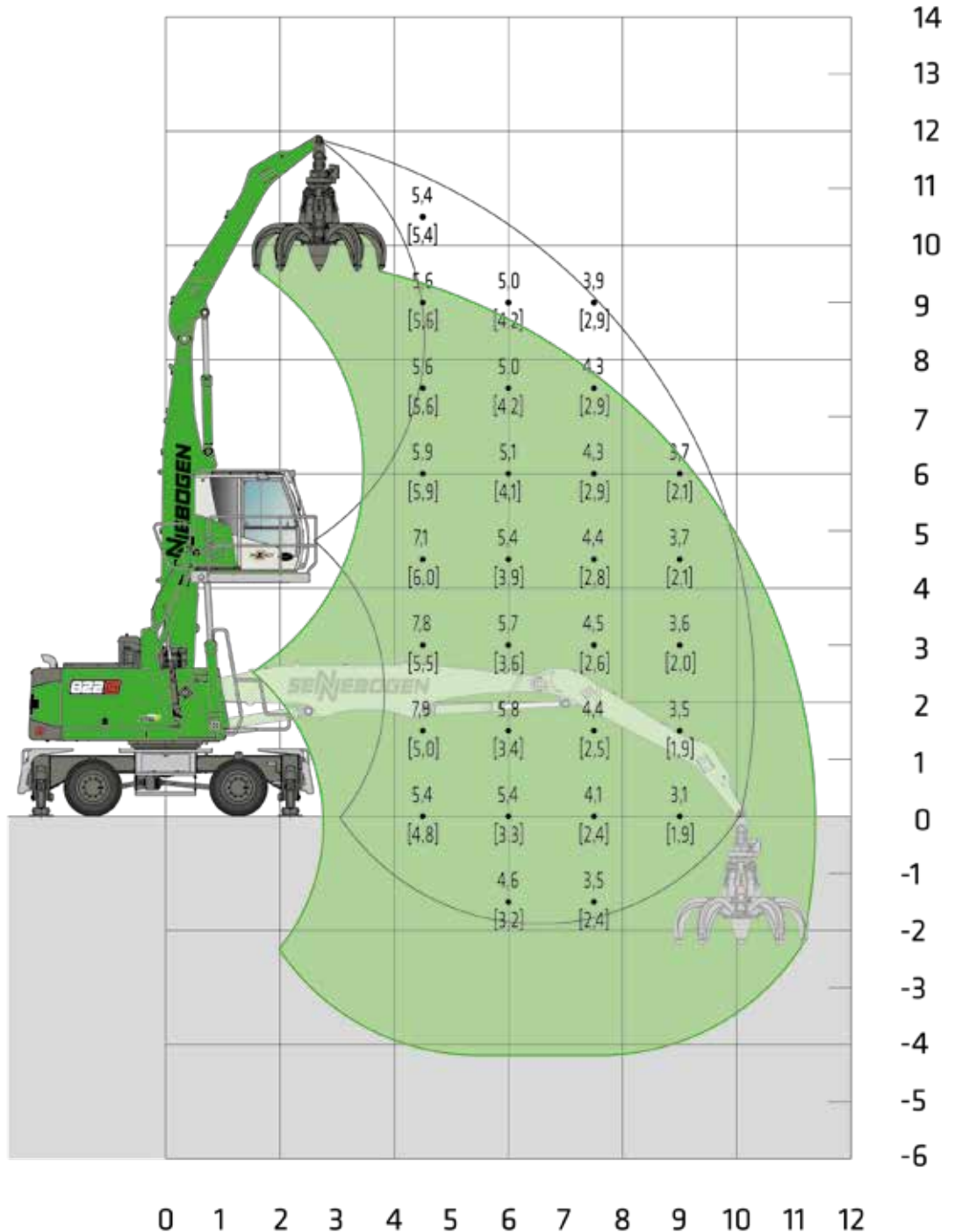
MP21



MAXCAB
2.80 m elevating (G280)



6.2 m boom
4.2 m grab stick



Machine shown
in mirror image

LOAD RATINGS

20220406105111
[20220406105631]

Notes:

All load ratings are given in tons (t) brought to bear at the end of the stick, without tools on firm level ground. Working tools such as grab, magnet, load hook etc. are included in the specified load ratings. The stated values are 75 % of the static tipping load or 87 % of the hydraulic lifting force according to ISO10567. According to EU standard EN 474/5, hydraulic material handlers used for hoisting must be equipped with a pipe rupture safety device on lifting and stick cylinders and an overload warning device. Load ratings apply to a machine with 4-point outrigger and for 360° slewing. The load ratings in brackets [] apply when the oscillating axle is blocked, unsupported, (free-standing) and for 360° slewing.

LOAD RATINGS K10 ULM (MOBILE)



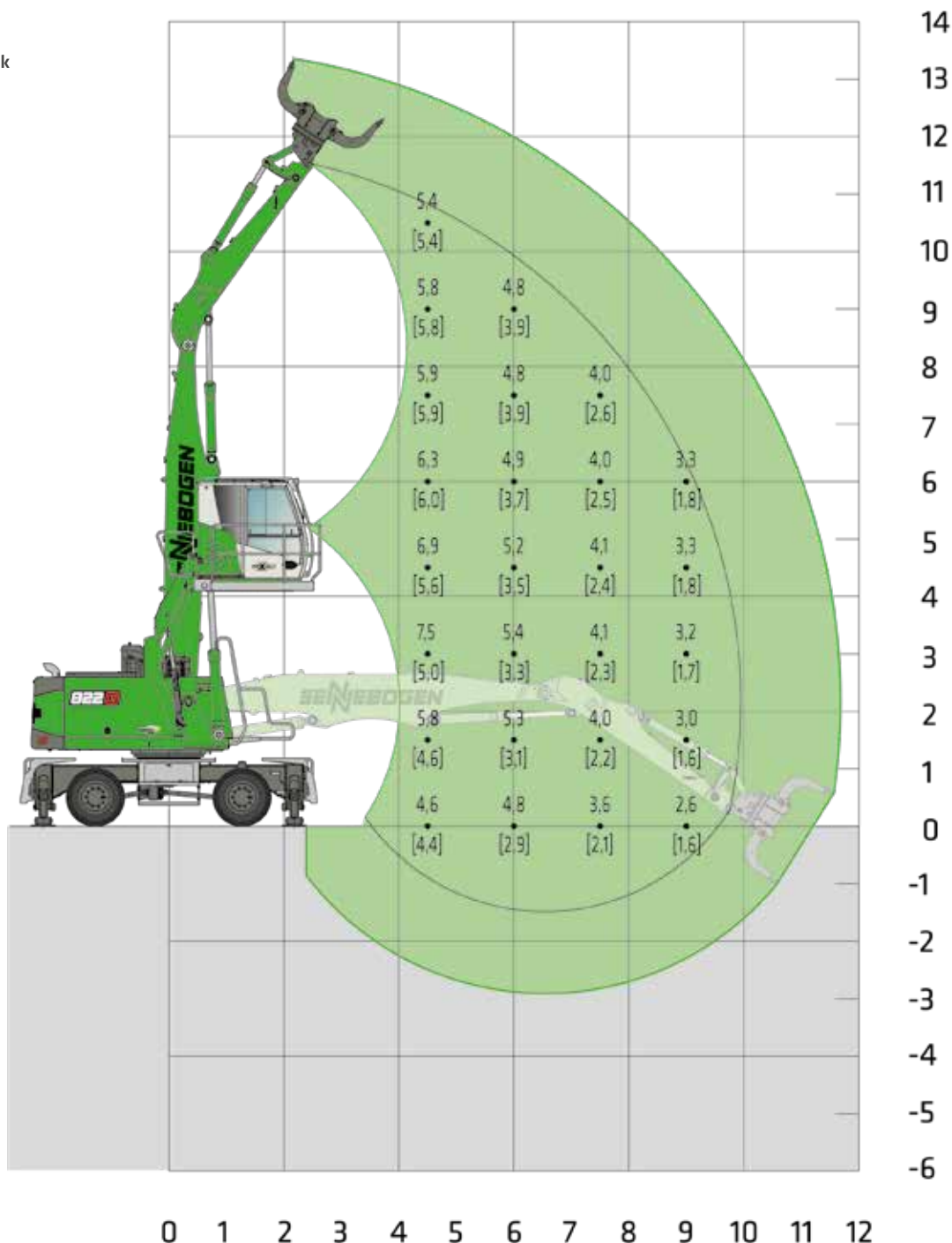
MP21



MAXCAB
2.80 m elevating (G280)



6.2 m boom
3.8 m grab stick



Machine shown in mirror image

20220406133402
[20220406133610]

Notes:

All load ratings are given in tons (t) brought to bear at the end of the stick, without tools on firm level ground. Working tools such as grab, magnet, load hook etc. are included in the specified load ratings. The stated values are 75 % of the static tipping load or 87 % of the hydraulic lifting force according to ISO10567. According to EU standard EN 474/5, hydraulic material handlers used for hoisting must be equipped with a pipe rupture safety device on lifting and stick cylinders and an overload warning device. Load ratings apply to a machine with 4-point outrigger and for 360° slewing. The load ratings in brackets [] apply when the oscillating axle is blocked, unsupported, (free-standing) and for 360° slewing.

LOAD RATINGS K9 (CRAWLER)



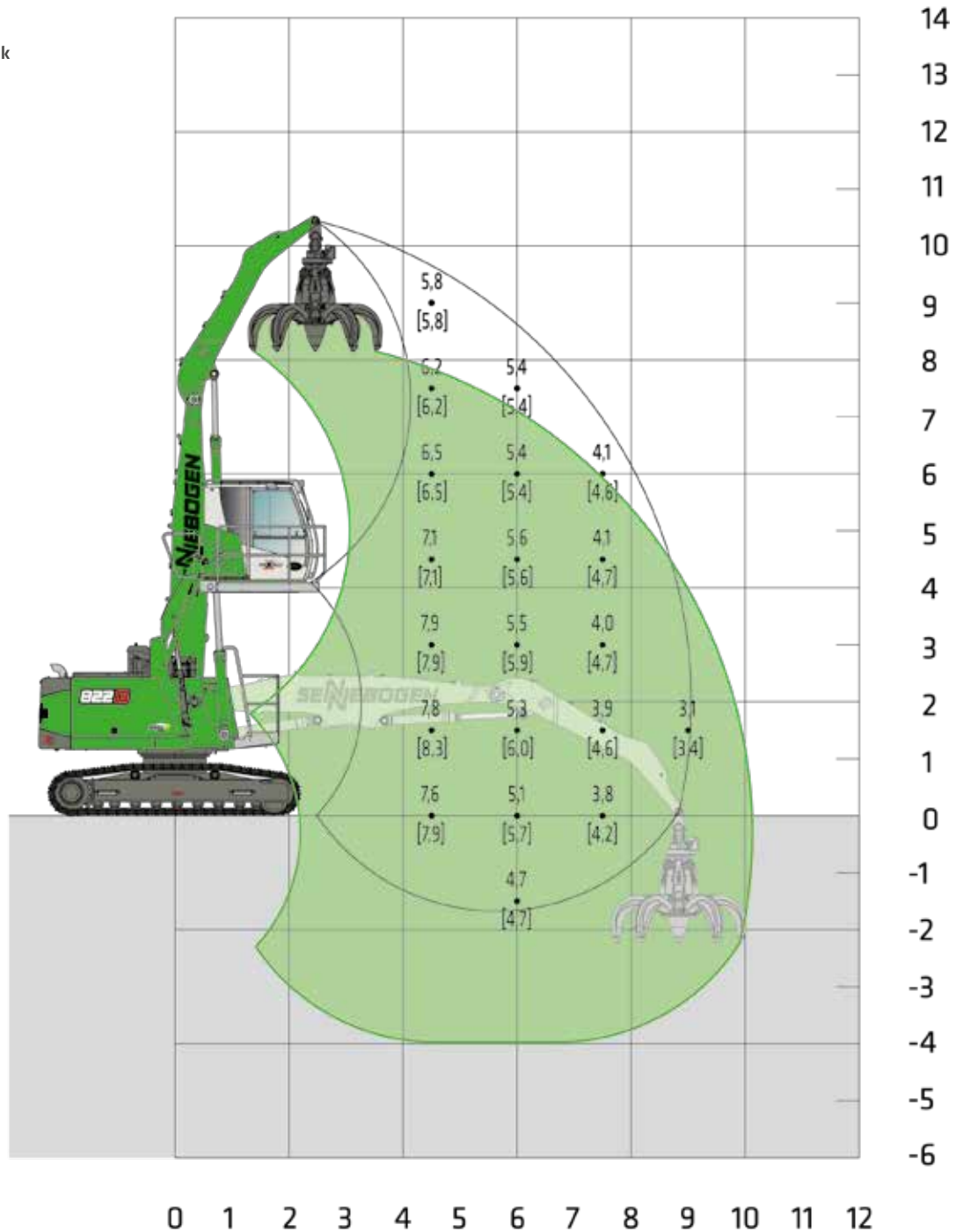
R25/240



MAXCAB
2.80 m elevating (G280)



5.3 m boom
3.8 m grab stick



Machine shown in mirror image

LOAD RATINGS

20220407060225

Notes:

All load ratings are given in tons (t) brought to bear at the end of the stick, without tools on firm level ground. Working tools such as grab, magnet, load hook, etc. are included in the specified load ratings. The stated values are 75 % of the static tipping load or 87 % of the hydraulic lifting force according to ISO10567. According to EU standard EN 474/5, hydraulic material handlers used for hoisting must be equipped with a pipe rupture safety device on lifting and stick cylinders and an overload warning device. The specified load ratings apply to maximum track width and 360° slewing. The load ratings in brackets [] apply longitudinally to the undercarriage.

LOAD RATINGS K9 ULM (CRAWLER)



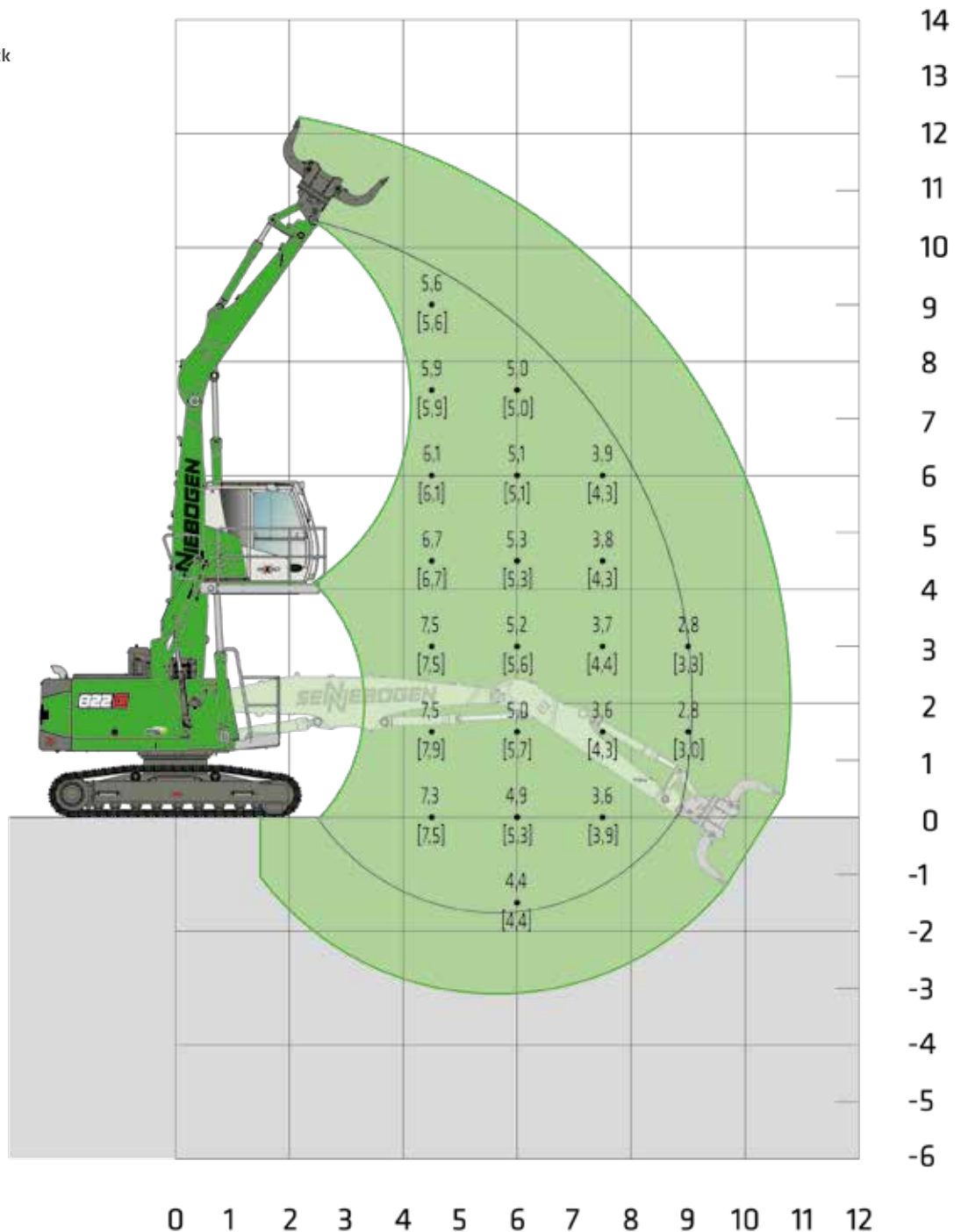
R25/240



MAXCAB
2.80 m elevating (G280)



5.3 m boom
3.8 m grab stick



Machine shown in mirror image

LOAD RATINGS

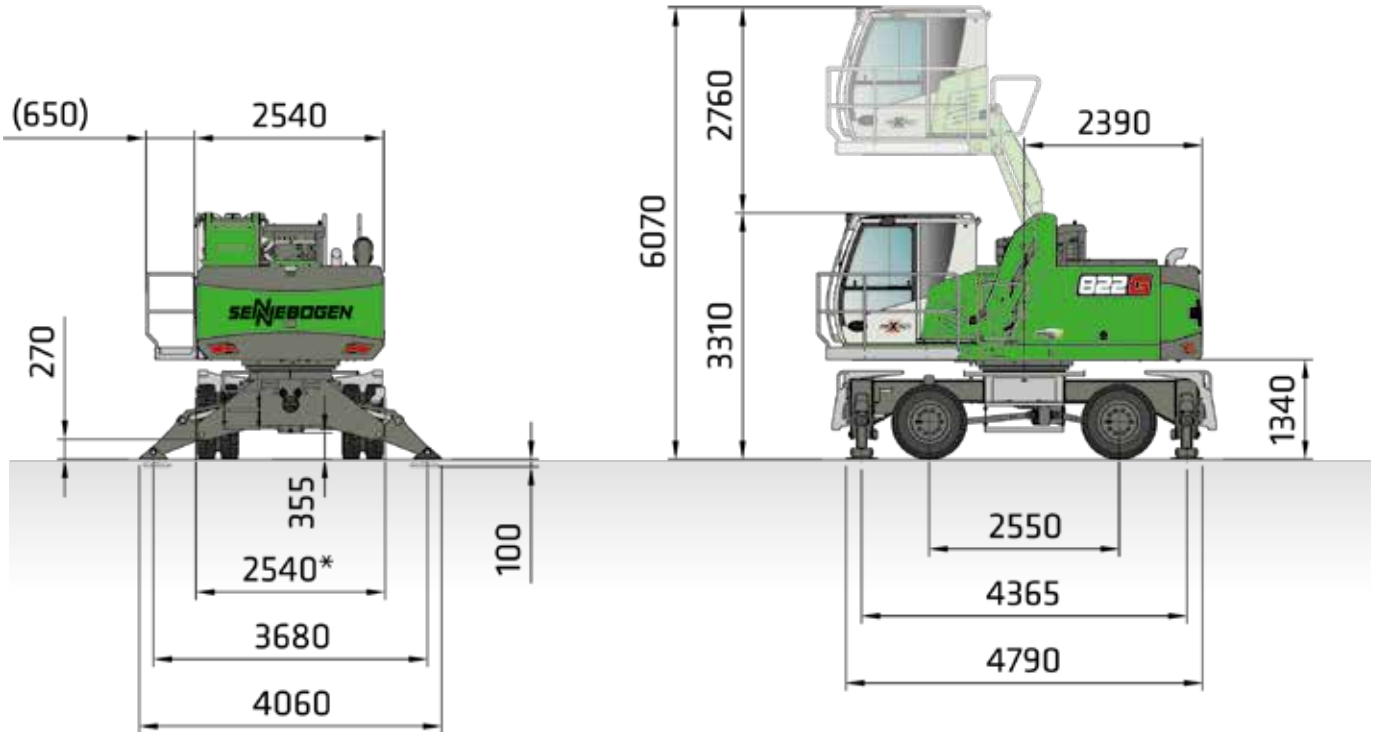
20220407055300

Notes:

All load ratings are given in tons (t) brought to bear at the end of the stick, without tools on firm level ground. Working tools such as grab, magnet, load hook, etc. are included in the specified load ratings. The stated values are 75 % of the static tipping load or 87 % of the hydraulic lifting force according to ISO10567. According to EU standard EN 474/5, hydraulic material handlers used for hoisting must be equipped with a pipe rupture safety device on lifting and stick cylinders and an overload warning device. The specified load ratings apply to maximum track width and 360° slewing. The load ratings in brackets [] apply longitudinally to the undercarriage.

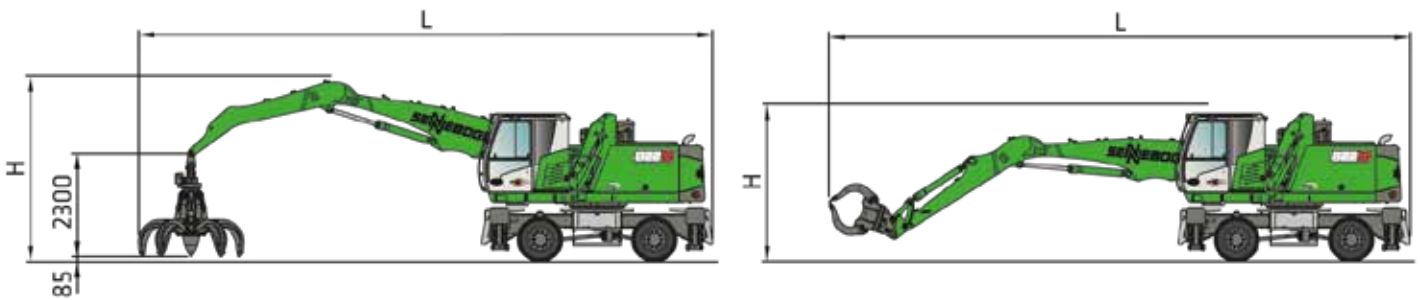
DIMENSIONS MOBILE

* = Transport width



822 G WITH MP21 MOBILE UNDERCARRIAGE AND G280 HYDRAULICALLY ELEVATING CAB (SERIES), SOLID RUBBER TIRES 10.00-20 (8X)

VERTICAL CLEARANCE WITH 600 L ORANGE PEEL GRAB VERTICAL CLEARANCE WITH 450 L SORTING GRAB

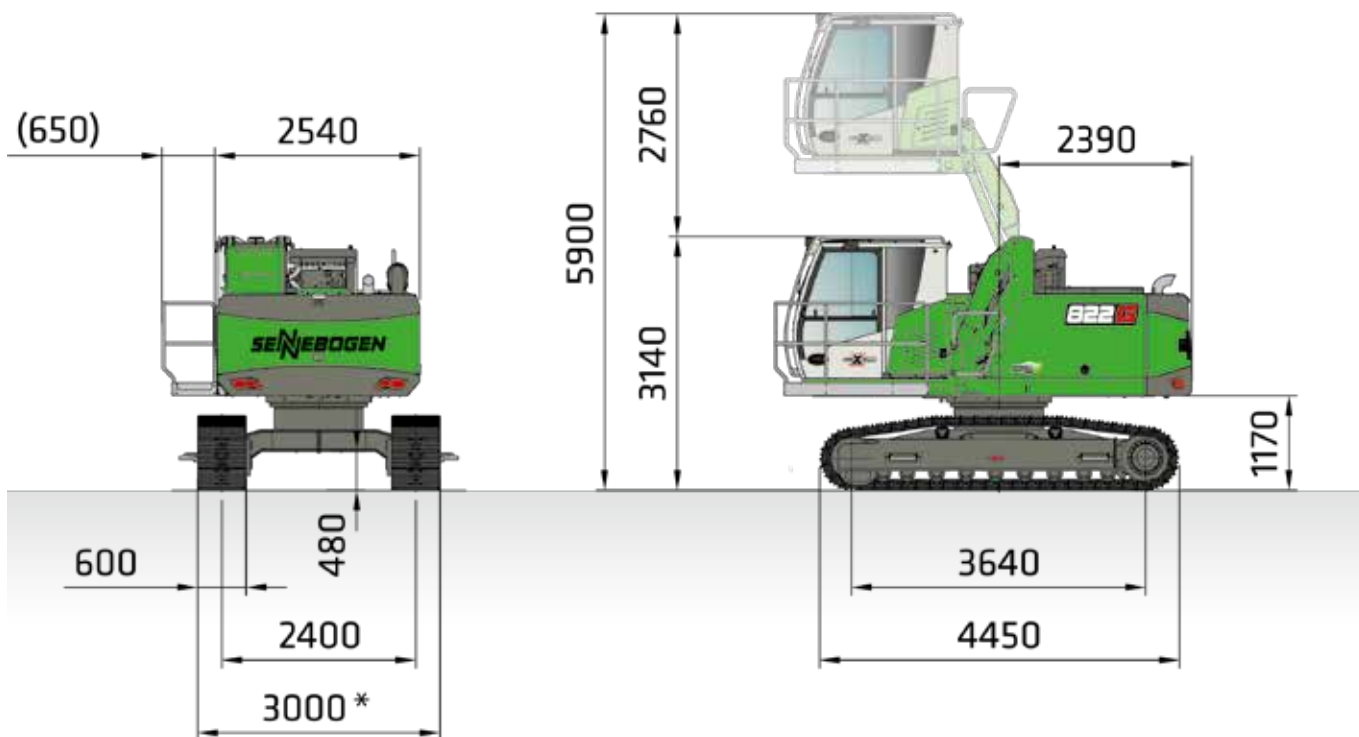


	COMPACT BOOM	GRAB STICK	PASSAGE LENGTH (L)	VERTICAL CLEARANCE (H) ORANGE PEEL GRAB	VERTICAL CLEARANCE (H) SORTING GRAB
K9	5.3 m	3.8 m	13.0 m	approx. 4.3 m	
K9 ULM	5.3 m	3.8 m ULM	13.0 m	approx. 4.3 m	approx. 3.5 m
K10	6.2 m	4.2 m	14.0 m	approx. 4.5 m	
K10 ULM	6.2 m	3.8 m ULM	14.0 m	approx. 4.5 m	approx. 3.5 m

Other transport dimensions on request

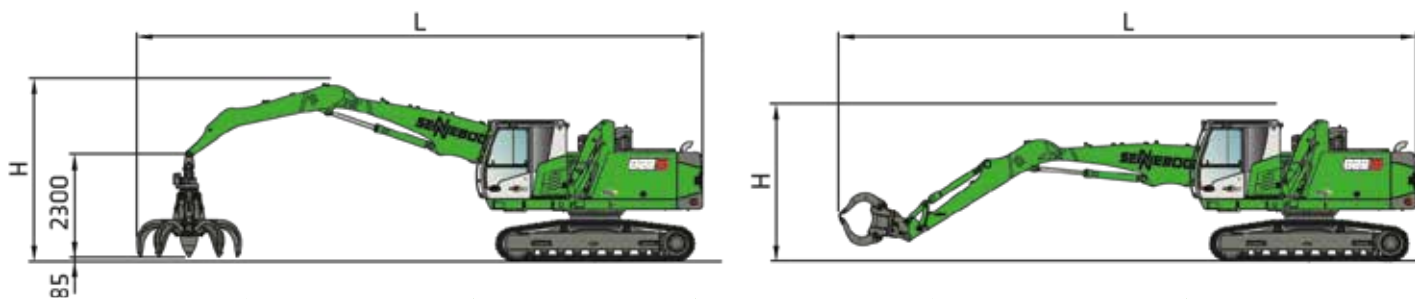
DIMENSIONS CRAWLER

* = Transport width



822 G WITH R25/240 CRAWLER UNDERCARRIAGE AND G280 HYDRAULICALLY ELEVATING CAB (SERIES)

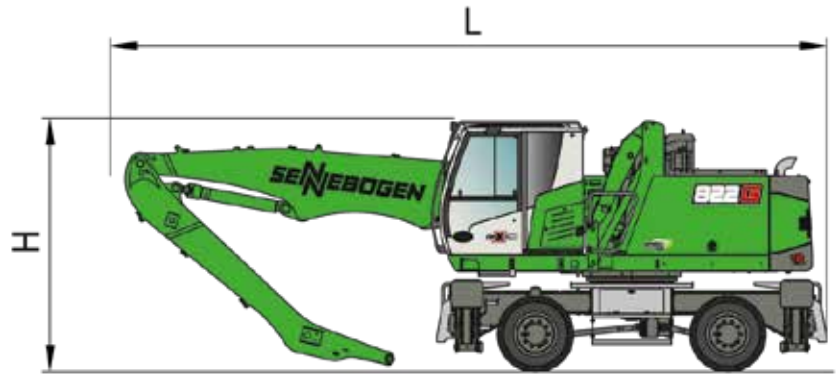
VERTICAL CLEARANCE WITH 600 L ORANGE PEEL GRAB VERTICAL CLEARANCE WITH 450 L SORTING GRAB



	COMPACT BOOM	GRAB STICK	PASSAGE LENGTH (L)	VERTICAL CLEARANCE (H) ORANGE PEEL GRAB	VERTICAL CLEARANCE (H) SORTING GRAB
K9	5.3 m	3.8 m	13.0 m	approx. 4.3 m	
K9 ULM	5.3 m	3.8 m ULM	13.0 m	approx. 4.3 m	approx. 3.5 m
K10	6.2 m	4.2 m	14.0 m	approx. 4.4 m	
K10 ULM	6.2 m	3.8 m ULM	14.0 m	approx. 4.3 m	approx. 3.5 m

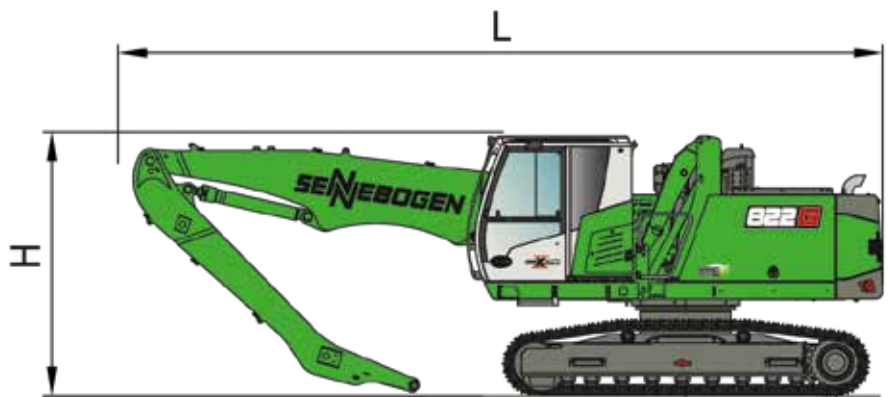
Other transport dimensions on request

TRANSPORT DIMENSIONS MOBILE/CRAWLER



822G TRANSPORT DIMENSIONS MP21

	COMPACT BOOM	GRAB STICK	TRANSPORT LENGTH (L)	TRANSPORT HEIGHT (H)
K9	5.3 m	3.8 m	8.6 m	3.35 m
K9 ULM	5.3 m	3.8 m ULM	8.6 m	3.35 m
K10	6.2 m	4.2 m	9.6 m	3.35 m
K10 ULM	6.2 m	3.8 m ULM	9.6 m	3.35 m



822G TRANSPORT DIMENSIONS R25/240

	COMPACT BOOM	GRAB STICK	TRANSPORT LENGTH (L)	TRANSPORT HEIGHT (H)
K9	5.3 m	3.8 m	8.5 m	3.25 m
K9 ULM	5.3 m	3.8 m ULM	8.5 m	3.25 m
K10	6.2 m	4.2 m	9.5 m	3.25 m
K10 ULM	6.2 m	3.8 m ULM	9.5 m	3.25 m

TRANSPORT DIMENSIONS

RECOMMENDED GRABS

SGM ORANGE PEEL GRAB (4 SHELLS)



TYPE / SIZE	GRAB CAPACITY	WEIGHT ¹		MAX. BULK DENSITY
		SHELL PROFILE		
		HO	G	
		kg	kg	t/m ³
SGM	I			2.0
500.20-4	500	835	975	
400.30-4	400	1290	1390	
600.30-4	600	1315	1445	
800.30-4	800	1350	1515	

SGM ORANGE PEEL GRAB (5 SHELLS)



TYPE / SIZE	GRAB CAPACITY	WEIGHT ¹		MAX. BULK DENSITY
		SHELL PROFILE ²		
		HO	G	
		kg	kg	t/m ³
SGM	I			2.0
500,20	500	970	1060	
400,30	400	1480	1530	
600,30	600	1510	1590	
800,30	800	1550	1660	

SGZ CLAMSHELL GRAB



TYPE / SIZE	GRAB CAPACITY	WEIGHT ¹	MAX. BULK DENSITY
		kg	
1000.40	1000	1440	2.0
1200.40	1200	1575	

SGR SORTING GRAB



TYPE SERIES / MODEL	GRAB CAPACITY	WEIGHT ¹
SGR	I	kg
800.30 L	380	1000
1000.30 L	450	1050
1200.30 L	520	1060

MAGNET PLATES



TYPE SERIES / MODEL	POWER	DEAD WEIGHT	BREAKAWAY FORCE	LOAD CAPACITY IN KG
WOKO	kW	kg	kN	Slab (safety factor 2)
S-RLB 10	4.8	730	190	9500
S-RLB 11.5	5.5	1060	240	12000
S-RLB 12.5	8.8	1310	280	14000

Recommended magnetic generator: 9 kW / 15 kW



Detailed information on grabs, as well as timber grabs, quick-release systems, and other attachments can be found in the SENNEBOGEN grab brochure

↳ www.sennebogen.com/grabs

¹ Weight information without grab suspension, stick bolts, hose system

² Half-open shells: Shell sheet steel width 400 mm, 500 mm for 1,250 l capacity and higher
Subject to technical changes.



SENNEBOGEN ACADEMY

Increase your knowledge because success is based on knowledge. In the SENNEBOGEN ACADEMY we place great importance on ensuring it flows powerfully.
 ↳ www.sennebogen-academy.com



SERVICE AND MAINTENANCE

Comprehensive customer service. And supply of spare parts. Service is a TOP priority for us.
 ↳ www.sennebogen.com/customer-service



SENtrack

Efficient fleet management with SENtrack: use information that would otherwise stay hidden and increase your efficiency.
 ↳ www.sennebogen.com/sentrack



RENTAL & USED

Discover the unique range of rental machines available from SENNEBOGEN Rental & Used. Find your rental machine here:
 ↳ www.sennebogen-rental-used.com

JOIN OUR OPERATORS' CLUB

The spotlight is on you and your machine! We focus on exclusive information, sharing experiences with other SENNEBOGEN operators as well as fun and enthusiasm.

All the benefits here ↳ www.sennebogen.com/operators-club



MOVE BIG THINGS WITH US



over **70**
years of
experience

100%
family company

over **1800**
experienced
specialists worldwide

4
production plants
in Germany

over **180**
sales and service partners
worldwide

27
different material
handlers



Telehandler
4-5.5 t

Balancer
130-300 t

Material handler
17-420 t

Duty cycle crane
13.5-300 t

Crawler crane
50-300 t

Telescopic crane
16-130 t

Port crane
300 t

This catalog describes machine models, the scope of equipment of individual models, and configuration options (standard equipment and optional equipment) of the machines delivered by SENNEBOGEN Maschinenfabrik GmbH. Machine illustrations may contain optional and supplementary equipment. Actual equipment may vary depending on the country to which the machines are delivered, especially in regard to standard and optional equipment. All product designations used may be trademarks of SENNEBOGEN Maschinenfabrik GmbH or other supplying companies, and any use by third parties for their own purposes may violate the rights of the owners.

Please contact your local SENNEBOGEN sales partner for information concerning the equipment variants offered. Requested performance characteristics are only binding if they are expressly stipulated upon conclusion of the contract. Delivery options and technical features are subject to change. All information is supplied without liability. Equipment is subject to change, and rights of advancement are reserved. © SENNEBOGEN Maschinenfabrik GmbH, Straubing, Germany. Reproduction in whole or in part only with written consent of SENNEBOGEN Maschinenfabrik GmbH, Straubing, Germany.



SENNEBOGEN
Maschinenfabrik GmbH
Hebbelstrasse 30
94315 Straubing, Germany


 www.sennebogen.com

MOVE BIG THINGS

SALES SENNEBOGEN

Green Line Sales

 +49 (0) 9421 / 540 - 146

 materialhandling@sennebogen.de

SPARE PARTS CENTER

Spare parts orders

 spareparts@sennebogen.de

AFTER SALES

Technical support

 service@sennebogen.de